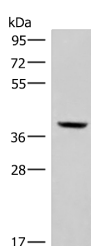


MEST Polyclonal Antibody

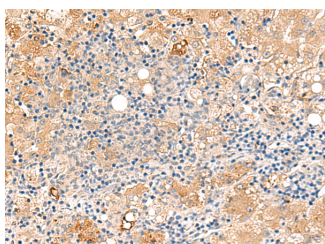
Catalog No.	E-AB-52898	Reactivity	H,M,R
Storage	Store at -20°C. Avoid freeze / thaw cycles.	Host	Rabbit
Applications	WB,IHC,ELISA	Isotype	IgG

Note: Centrifuge before opening to ensure complete recovery of vial contents.

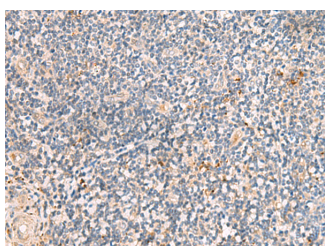
Images



Western blot analysis of Mouse kidney tissue lysate using MEST Polyclonal Antibody at dilution of 1:350



Immunohistochemistry of paraffin-embedded Human liver cancer tissue using MEST Polyclonal Antibody at dilution of 1:50(x200)



Immunohistochemistry of paraffin-embedded Human tonsil tissue using MEST Polyclonal Antibody at dilution of 1:50(x200)

Immunogen Information

Immunogen	Fusion protein of human MEST
Gene Accession	BC002413
Swissprot	Q5EB52
Synonyms	MEST,MEST,MGC111102,MGC8703,Paternally-expressed gene 1 protein,PEG1

Product Information

Calculated MW	39 kDa
Observed MW	Refer to figures
Buffer	PBS with 0.05% NaN ₃ and 40% Glycerol,pH7.4
Purify	Antigen affinity purification
Dilution	WB 1:500-1:2000, IHC 1:50-1:300, ELISA 1:5000-1:10000

Background

MEST(Mesoderm-specific transcript homolog protein) is also named as PEG1 and belongs to the AB hydrolase superfamily. The gene is a imprinting gene,which is associated with growth of mesodermal origin cells and plays important roles in embryo development. It is also a novel regulator of Wnt/CTNNB signalling during adipogenic differentiation. It has 3 isoforms produced by alternative splicing and the full length protein has a glycosylation site.

For Research Use Only

Thank you for your recent purchase.
 If you would like to learn more about antibodies,please visit www.elabscience.com.

Focus on your research
Service for life science

Applications:WB-Western Blot IHC-Immunohistochemistry IF-Immunofluorescence IP-Immunoprecipitation FC-Flow cytometry ChIP-Chromatin Immunoprecipitation Reactivity: H-Human R-Rat M-Mouse Mk-Monkey Dg-Dog Ch-Chicken Hm-Hamster Rb-Rabbit Sh-Sheep Pg-Pig Z-Zebrafish X-Xenopus C-Cow.