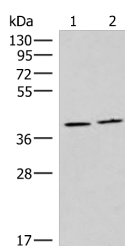


HMGCLL1 Polyclonal Antibody

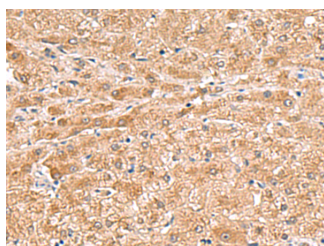
Catalog No.	E-AB-52900	Reactivity	H,M,R
Storage	Store at -20°C. Avoid freeze / thaw cycles.	Host	Rabbit
Applications	WB,IHC,ELISA	Isotype	IgG

Note: Centrifuge before opening to ensure complete recovery of vial contents.

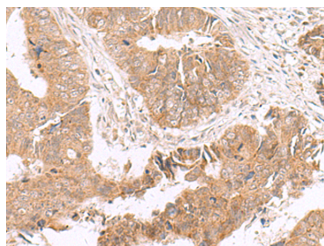
Images



Western blot analysis of Human placenta tissue and Human fetal brain tissue lysates using HMGCLL1 Polyclonal Antibody at dilution of 1:1000



Immunohistochemistry of paraffin-embedded Human liver cancer tissue using HMGCLL1 Polyclonal Antibody at dilution of 1:70(×200)



Immunohistochemistry of paraffin-embedded Human colorectal cancer tissue using HMGCLL1 Polyclonal Antibody at dilution of 1:70(×200)

Immunogen Information

Immunogen	Fusion protein of human HMGCLL1
Gene Accession	BC024194
Swissprot	Q8TB92
Synonyms	bA418P12.1,Endoplasmic reticulum 3 hydroxymethyl 3 methylglutaryl CoA lyase,er Chl

Product Information

Calculated MW	40 kDa
Observed MW	Refer to figures
Buffer	PBS with 0.05% NaN ₃ and 40% Glycerol,pH7.4
Purify	Antigen affinity purification
Dilution	WB 1:1000-1:5000, IHC 1:50-1:300, ELISA 1:5000-1:10000

Background

Non-mitochondrial 3-hydroxymethyl-3-methylglutaryl-CoA lyase that catalyzes a cation-dependent cleavage of (S)-3-hydroxy-3-methylglutaryl-CoA into acetyl-CoA and acetoacetate, a key step in ketogenesis, the products of which support energy production in nonhepatic animal tissues.

For Research Use Only

Thank you for your recent purchase.
 If you would like to learn more about antibodies, please visit www.elabscience.com.

**Focus on your research
 Service for life science**

Applications:WB-Western Blot IHC-Immunohistochemistry IF-Immunofluorescence IP-Immunoprecipitation FC-Flow cytometry ChIP-Chromatin Immunoprecipitation Reactivity: H-Human R-Rat M-Mouse Mk-Monkey Dg-Dog Ch-Chicken Hm-Hamster Rb-Rabbit Sh-Sheep Pg-Pig Z-Zebrafish X-Xenopus C-Cow.