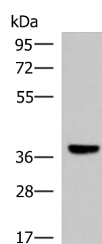


LRG1 Polyclonal Antibody

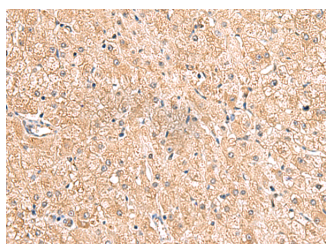
| | | | |
|---------------------|---|-------------------|--------|
| Catalog No. | E-AB-52903 | Reactivity | H,M |
| Storage | Store at -20°C. Avoid freeze / thaw cycles. | Host | Rabbit |
| Applications | WB,IHC,ELISA | Isotype | IgG |

Note: Centrifuge before opening to ensure complete recovery of vial contents.

Images



Western blot analysis of Mouse liver tissue lysate using LRG1 Polyclonal Antibody at dilution of 1:1000



Immunohistochemistry of paraffin-embedded Human liver cancer tissue using LRG1 Polyclonal Antibody at dilution of 1:80(×200)

Immunogen Information

| | |
|-----------------------|--|
| Immunogen | Fusion protein of human LRG1 |
| Gene Accession | BC034389 |
| Swissprot | P02750 |
| Synonyms | 1300008B03Rik,2310031E04Rik,A2GL,A2GL,HMF T1766,LRG,LRG1 |

Product Information

| | |
|----------------------|--|
| Calculated MW | 38 kDa |
| Observed MW | Refer to figures |
| Buffer | PBS with 0.05% NaN3 and 40% Glycerol,pH7.4 |
| Purify | Antigen affinity purification |
| Dilution | WB 1:1000-1:5000, IHC 1:50-1:300, ELISA 1:5000-1:10000 |

Background

The leucine-rich repeat (LRR) family of proteins, including LRG1, have been shown to be involved in protein-protein interaction, signal transduction, and cell adhesion and development. LRG1 is expressed during granulocyte differentiation.

For Research Use Only

Thank you for your recent purchase.
 If you would like to learn more about antibodies, please visit www.elabscience.com.

**Focus on your research
 Service for life science**

Applications:WB-Western Blot IHC-Immunohistochemistry IF-Immunofluorescence IP-Immunoprecipitation FC-Flow cytometry ChIP-Chromatin Immunoprecipitation Reactivity: H-Human R-Rat M-Mouse Mk-Monkey Dg-Dog Ch-Chicken Hm-Hamster Rb-Rabbit Sh-Sheep Pg-Pig Z-Zebrafish X-Xenopus C-Cow.