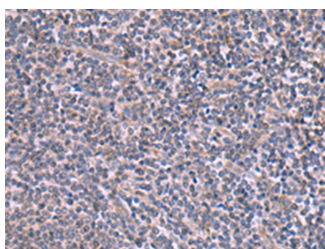


RIC3 Polyclonal Antibody

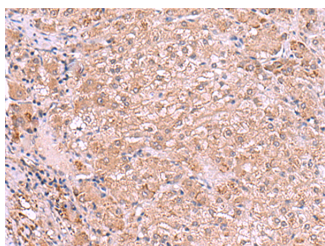
Catalog No.	E-AB-52913	Reactivity	H,M
Storage	Store at -20°C. Avoid freeze / thaw cycles.	Host	Rabbit
Applications	IHC,ELISA	Isotype	IgG

Note: Centrifuge before opening to ensure complete recovery of vial contents.

Images



Immunohistochemistry of paraffin-embedded Human tonsil tissue using RIC3 Polyclonal Antibody at dilution of 1:90(×200)



Immunohistochemistry of paraffin-embedded Human liver cancer tissue using RIC3 Polyclonal Antibody at dilution of 1:90(×200)

Immunogen Information

Immunogen	Fusion protein of human RIC3
Gene Accession	BC022455
Swissprot	Q7Z5B4
Synonyms	AYST720,FLJ11608,PRO1385,Protein RIC-3,Ric3,RIC3

Product Information

Buffer	PBS with 0.05% NaN ₃ and 40% Glycerol,pH7.4
Purify	Antigen affinity purification
Dilution	IHC 1:50-1:300, ELISA 1:5000-1:10000

Background

This gene encodes a member of the resistance to inhibitors of cholinesterase 3-like family which functions as a chaperone of specific 5-hydroxytryptamine type 3 receptor and nicotinic acetylcholine receptor subtypes. The encoded protein influences the folding and assembly of these receptor subunits in the endoplasmic reticulum and expression on the cell surface. This protein contains an N-terminal transmembrane domain, a proline-rich spacer, and a cytosolic C-terminal coiled-coil domain. Alternative splicing results in multiple transcript variants.

For Research Use Only

Thank you for your recent purchase.
 If you would like to learn more about antibodies, please visit www.elabscience.com.

**Focus on your research
 Service for life science**

Applications:WB-Western Blot IHC-Immunohistochemistry IF-Immunofluorescence IP-Immunoprecipitation FC-Flow cytometry ChIP-Chromatin Immunoprecipitation Reactivity: H-Human R-Rat M-Mouse Mk-Monkey Dg-Dog Ch-Chicken Hm-Hamster Rb-Rabbit Sh-Sheep Pg-Pig Z-Zebrafish X-Xenopus C-Cow.