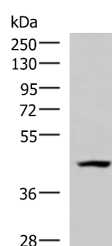


## MAGEC2 Polyclonal Antibody

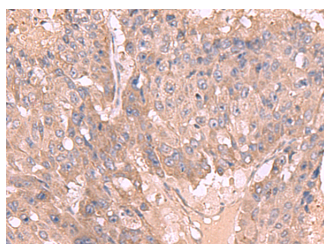
<b>Catalog No.</b>	E-AB-52920	<b>Reactivity</b>	H
<b>Storage</b>	Store at -20°C. Avoid freeze / thaw cycles.	<b>Host</b>	Rabbit
<b>Applications</b>	WB,IHC,ELISA	<b>Isotype</b>	IgG

**Note:** Centrifuge before opening to ensure complete recovery of vial contents.

### Images



Western blot analysis of 293T cell lysate using MAGEC2 Polyclonal Antibody at dilution of 1:700



Immunohistochemistry of paraffin-embedded Human liver cancer tissue using MAGEC2 Polyclonal Antibody at dilution of 1:50(x200)

### Immunogen Information

<b>Immunogen</b>	Fusion protein of human MAGEC2
<b>Gene Accession</b>	BC013318
<b>Swissprot</b>	Q9UBF1
<b>Synonyms</b>	CT10,HCA587,MAGC2,MAGE C2 antigen,MAGE E1 antigen,MAGE family member C2

### Product Information

<b>Calculated MW</b>	41 kDa
<b>Observed MW</b>	Refer to figures
<b>Buffer</b>	PBS with 0.05% NaN <sub>3</sub> and 40% Glycerol,pH7.4
<b>Purify</b>	Antigen affinity purification
<b>Dilution</b>	WB 1:500-1:2000, IHC 1:50-1:300, ELISA 1:5000-1:10000

### Background

This gene is a member of the MAGEC gene family. It is not expressed in normal tissues, except for testis, and is expressed in tumors of various histological types. This gene and the other MAGEC genes are clustered on chromosome Xq26-q27.

#### For Research Use Only

Thank you for your recent purchase.  
 If you would like to learn more about antibodies, please visit [www.elabscience.com](http://www.elabscience.com).

**Focus on your research  
 Service for life science**

Applications:WB-Western Blot IHC-Immunohistochemistry IF-Immunofluorescence IP-Immunoprecipitation FC-Flow cytometry ChIP-Chromatin Immunoprecipitation Reactivity: H-Human R-Rat M-Mouse Mk-Monkey Dg-Dog Ch-Chicken Hm-Hamster Rb-Rabbit Sh-Sheep Pg-Pig Z-Zebrafish X-Xenopus C-Cow.