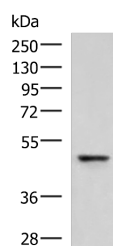


RMDN2 Polyclonal Antibody

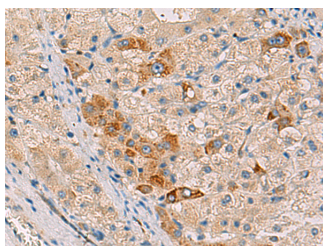
Catalog No.	E-AB-52932	Reactivity	H,M,R
Storage	Store at -20°C. Avoid freeze / thaw cycles.	Host	Rabbit
Applications	WB,IHC,ELISA	Isotype	IgG

Note: Centrifuge before opening to ensure complete recovery of vial contents.

Images



Western blot analysis of Human fetal liver tissue lysate using RMDN2 Polyclonal Antibody at dilution of 1:750



Immunohistochemistry of paraffin-embedded Human liver cancer tissue using RMDN2 Polyclonal Antibody at dilution of 1:50(x200)

Immunogen Information

Immunogen	Fusion protein of human RMDN2
Gene Accession	BC024243
Swissprot	Q96LZ7
Synonyms	Fam82a1,FLJ32954,FLJ38143,hRMD 2,hRMD 4,hRMD-2,hRMD4,MGC33318,RMD 2,RMD-2,RMD2,RMD2

Product Information

Calculated MW	47 kDa
Observed MW	Refer to figures
Buffer	PBS with 0.05% NaN ₃ and 40% Glycerol,pH7.4
Purify	Antigen affinity purification
Dilution	WB 1:500-1:2000, IHC 1:30-1:150, ELISA 1:5000-1:10000

Background

The human protein FAM82A1, also known as regulator of microtubule dynamics 2 (RMD2), was one of three proteins identified as related to a family of microtubule-associated proteins in *C. elegans*. FAM82A1 contains multiple coiled-coil domains and localize to the spindle microtubules and spindle poles during cell division. During interphase, RMD2 localizes to the cytoplasm with protein observed in the microtubule lattice and perinuclear region.

For Research Use Only

Thank you for your recent purchase.
 If you would like to learn more about antibodies, please visit www.elabscience.com.

**Focus on your research
 Service for life science**

Applications:WB-Western Blot IHC-Immunohistochemistry IF-Immunofluorescence IP-Immunoprecipitation FC-Flow cytometry ChIP-Chromatin Immunoprecipitation Reactivity: H-Human R-Rat M-Mouse Mk-Monkey Dg-Dog Ch-Chicken Hm-Hamster Rb-Rabbit Sh-Sheep Pg-Pig Z-Zebrafish X-Xenopus C-Cow.