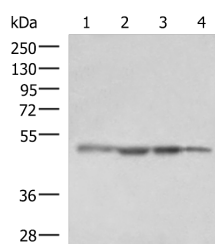


RHAG Polyclonal Antibody

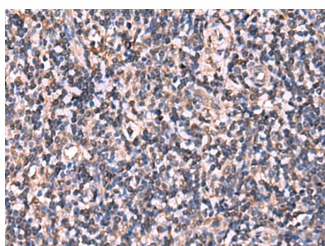
Catalog No.	E-AB-52939	Reactivity	H,M
Storage	Store at -20°C. Avoid freeze / thaw cycles.	Host	Rabbit
Applications	WB,IHC,ELISA	Isotype	IgG

Note: Centrifuge before opening to ensure complete recovery of vial contents.

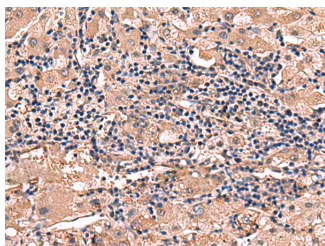
Images



Western blot analysis of HepG2 cell Human fetal liver tissue K562 cell NIH/3T3 cell lysates using RHAG Polyclonal Antibody at dilution of 1:1600



Immunohistochemistry of paraffin-embedded Human tonsil tissue using RHAG Polyclonal Antibody at dilution of 1:110(×200)



Immunohistochemistry of paraffin-embedded Human liver cancer tissue using RHAG Polyclonal Antibody at dilution of 1:110(×200)

Immunogen Information

Immunogen	Fusion protein of human RHAG
Gene Accession	BC012605
Swissprot	Q02094
Synonyms	CD241,Rh50 GP,RH50A,Rh50GP,Rhesus blood group family type A glycoprotein,SLC42A1

Product Information

Calculated MW	44 kDa
Observed MW	Refer to figures
Buffer	PBS with 0.05% NaN ₃ and 40% Glycerol,pH7.4
Purify	Antigen affinity purification
Dilution	WB 1:1000-1:5000, IHC 1:50-1:300, ELISA 1:5000-1:10000

Background

The protein encoded by this gene is erythrocyte-specific and is thought to be part of a membrane channel that transports ammonium and carbon dioxide across the blood cell membrane. The encoded protein appears to interact with Rh blood group antigens and Rh30 polypeptides. Defects in this gene are a cause of regulator type Rh-null hemolytic anemia (RHN), or Rh-deficiency syndrome. RHAG (Rh-Associated Glycoprotein) is a Protein Coding gene. Diseases associated with RHAG include Anemia, Hemolytic, Rh-Null, Regulator Type and Stomatocytosis I. Among its related pathways are Transport of glucose and other sugars, bile salts and organic acids, metal ions and amine compounds and Erythrocytes take up carbon dioxide and release oxygen. GO annotations related to this gene include ankyrin binding and ammonium transmembrane transporter activity. An important paralog of this gene is RHCG.

For Research Use Only

Thank you for your recent purchase.
 If you would like to learn more about antibodies, please visit www.elabscience.com.

Focus on your research
Service for life science

Applications:WB-Western Blot IHC-Immunohistochemistry IF-Immunofluorescence IP-Immunoprecipitation FC-Flow cytometry ChIP-Chromatin Immunoprecipitation Reactivity: H-Human R-Rat M-Mouse Mk-Monkey Dg-Dog Ch-Chicken Hm-Hamster Rb-Rabbit Sh-Sheep Pg-Pig Z-Zebrafish X-Xenopus C-Cow.