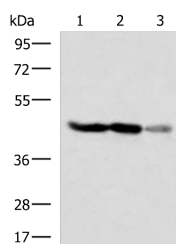


FDFT1 Polyclonal Antibody

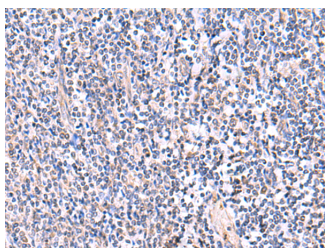
Catalog No.	E-AB-52940	Reactivity	H,M,R
Storage	Store at -20°C. Avoid freeze / thaw cycles.	Host	Rabbit
Applications	WB,IHC,ELISA	Isotype	IgG

Note: Centrifuge before opening to ensure complete recovery of vial contents.

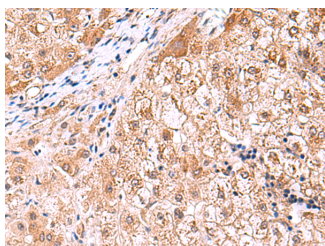
Images



Western blot analysis of HT29 and HepG2 cell Human fetal brain tissue lysates using FDFT1 Polyclonal Antibody at dilution of 1:1000



Immunohistochemistry of paraffin-embedded Human tonsil tissue using FDFT1 Polyclonal Antibody at dilution of 1:75(×200)



Immunohistochemistry of paraffin-embedded Human liver cancer tissue using FDFT1 Polyclonal Antibody at dilution of 1:75(×200)

Immunogen Information

Immunogen	Fusion protein of human FDFT1
Gene Accession	BC009251
Swissprot	P37268
Synonyms	DGPT,ERG9,FDFT,FDFT1,FPP:FPP farnesyltransferase,SQS,Squalene synthetase,SS

Product Information

Calculated MW	48 kDa
Observed MW	Refer to figures
Buffer	PBS with 0.05% NaN ₃ and 40% Glycerol,pH7.4
Purify	Antigen affinity purification
Dilution	WB 1:1000-1:5000, IHC 1:40-1:200, ELISA 1:5000-1:10000

Background

This gene encodes a membrane-associated enzyme located at a branch point in the mevalonate pathway. The encoded protein is the first specific enzyme in cholesterol biosynthesis, catalyzing the dimerization of two molecules of farnesyl diphosphate in a two-step reaction to form squalene.

For Research Use Only

Thank you for your recent purchase.
 If you would like to learn more about antibodies, please visit www.elabscience.com.

**Focus on your research
 Service for life science**

Applications:WB-Western Blot IHC-Immunohistochemistry IF-Immunofluorescence IP-Immunoprecipitation FC-Flow cytometry ChIP-Chromatin Immunoprecipitation Reactivity: H-Human R-Rat M-Mouse Mk-Monkey Dg-Dog Ch-Chicken Hm-Hamster Rb-Rabbit Sh-Sheep Pg-Pig Z-Zebrafish X-Xenopus C-Cow.