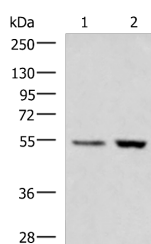


ZSWIM1 Polyclonal Antibody

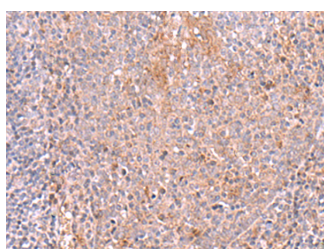
Catalog No.	E-AB-52962	Reactivity	H,M
Storage	Store at -20°C. Avoid freeze / thaw cycles.	Host	Rabbit
Applications	WB,IHC,ELISA	Isotype	IgG

Note: Centrifuge before opening to ensure complete recovery of vial contents.

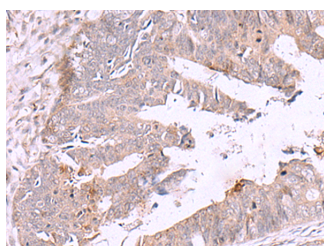
Images



Western blot analysis of Human placenta tissue LOVO cell lysates using ZSWIM1 Polyclonal Antibody at dilution of 1:550



Immunohistochemistry of paraffin-embedded Human tonsil tissue using ZSWIM1 Polyclonal Antibody at dilution of 1:55(×200)



Immunohistochemistry of paraffin-embedded Human colorectal cancer tissue using ZSWIM1 Polyclonal Antibody at dilution of 1:55(×200)

Immunogen Information

Immunogen	Fusion protein of human ZSWIM1
Gene Accession	BC001672
Swissprot	Q9BR11
Synonyms	C20orf162,dJ337O18.5,Zinc finger SWIM domain-containing protein 1,ZSWIM1,ZSWM1

Product Information

Calculated MW	55 kDa
Observed MW	Refer to figures
Buffer	PBS with 0.05% NaN ₃ and 40% Glycerol,pH7.4
Purify	Antigen affinity purification
Dilution	WB 1:500-1:2000, IHC 1:50-1:300, ELISA 1:5000-1:10000

Background

Zinc-finger proteins contain DNA-binding domains and have a wide variety of functions, most of which encompass some form of transcriptional activation or repression. ZSWIM1 (zinc finger SWIM domain-containing protein 1), also known as C20orf162, is a 485 amino acid protein that contains one SWIM-type zinc finger. The gene encoding ZSWIM1 maps to human chromosome 20. Comprising approximately 2% of the human genome, chromosome 20 contains nearly 63 million bases that encode over 600 genes, some of which are associated with Creutzfeldt-Jakob disease, amyotrophic lateral sclerosis, spinal muscular atrophy, ring chromosome 20 epilepsy syndrome and Alagille syndrome. Additionally, chromosome 20 contains a region with numerous genes which are thought important for seminal production and may be potential targets for male contraception.

For Research Use Only

Thank you for your recent purchase.
 If you would like to learn more about antibodies, please visit www.elabscience.com.

**Focus on your research
 Service for life science**

Applications:WB-Western Blot IHC-Immunohistochemistry IF-Immunofluorescence IP-Immunoprecipitation FC-Flow cytometry ChIP-Chromatin Immunoprecipitation Reactivity: H-Human R-Rat M-Mouse Mk-Monkey Dg-Dog Ch-Chicken Hm-Hamster Rb-Rabbit Sh-Sheep Pg-Pig Z-Zebrafish X-Xenopus C-Cow.