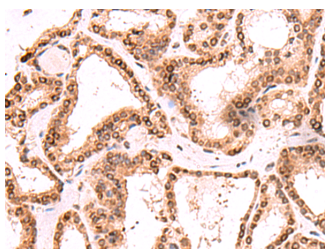


TOR1AIP1 Polyclonal Antibody

Catalog No.	E-AB-52965	Reactivity	H,M,R
Storage	Store at -20°C. Avoid freeze / thaw cycles.	Host	Rabbit
Applications	IHC,ELISA	Isotype	IgG

Note: Centrifuge before opening to ensure complete recovery of vial contents.

Images



Immunohistochemistry of paraffin-embedded Human thyroid cancer tissue using TOR1AIP1 Polyclonal Antibody at dilution of 1:60(×200)

Immunogen Information

Immunogen	Fusion protein of human TOR1AIP1
Gene Accession	BC023247
Swissprot	Q5JTV8
Synonyms	LAP1,LAP1B,TOIP1,TOR1AIP1,Torsin A interacting protein 1,Torsin-1A-interacting protein 1

Product Information

Calculated MW	1
Observed MW	1
Buffer	PBS with 0.05% NaN ₃ and 40% Glycerol,pH7.4
Purify	Antigen affinity purification
Clone No.	1
Dilution	IHC 1:50-1:300, ELISA 1:5000-1:10000

Background

This gene encodes a type 2 integral membrane protein that binds A- and B-type lamins. The encoded protein localizes to the inner nuclear membrane and may be involved in maintaining the attachment of the nuclear membrane to the nuclear lamina during cell division. Alternate splicing results in multiple transcript variants. TOR1AIP1 (Torsin 1A Interacting Protein 1) is a Protein Coding gene. Diseases associated with TOR1AIP1 include Muscular Dystrophy, Limb-Girdle, Type 2E. GO annotations related to this gene include cytoskeletal protein binding and ATPase activator activity. An important paralog of this gene is TOR1AIP2.

For Research Use Only

Thank you for your recent purchase.
 If you would like to learn more about antibodies, please visit www.elabscience.com.

**Focus on your research
 Service for life science**

Applications:WB-Western Blot IHC-Immunohistochemistry IF-Immunofluorescence IP-Immunoprecipitation FC-Flow cytometry ChIP-Chromatin Immunoprecipitation Reactivity: H-Human R-Rat M-Mouse Mk-Monkey Dg-Dog Ch-Chicken Hm-Hamster Rb-Rabbit Sh-Sheep Pg-Pig Z-Zebrafish X-Xenopus C-Cow.