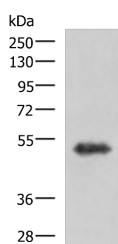


## TSEN2 Polyclonal Antibody

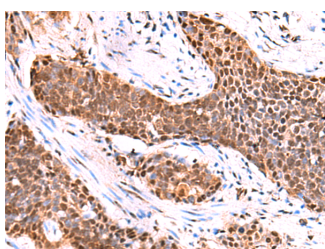
|                     |   |                   |        |
|---------------------|---|-------------------|--------|
| <b>Catalog No.</b>  | E-AB-52966                                  | <b>Reactivity</b> | H,M,R  |
| <b>Storage</b>      | Store at -20°C. Avoid freeze / thaw cycles. | <b>Host</b>       | Rabbit |
| <b>Applications</b> | WB,IHC,ELISA                                | <b>Isotype</b>    | IgG    |

**Note:** Centrifuge before opening to ensure complete recovery of vial contents.

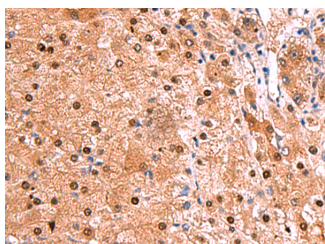
### Images



Western blot analysis of Human fetal brain tissue lysate using TSEN2 Polyclonal Antibody at dilution of 1:1000



Immunohistochemistry of paraffin-embedded Human esophagus cancer tissue using TSEN2 Polyclonal Antibody at dilution of 1:80(x200)



Immunohistochemistry of paraffin-embedded Human liver cancer tissue using TSEN2 Polyclonal Antibody at dilution of 1:80(x200)

### Immunogen Information

|                       |                                      |
|-----------------------|--------------------------------------|
| <b>Immunogen</b>      | Fusion protein of human TSEN2        |
| <b>Gene Accession</b> | BC004178                             |
| <b>Swissprot</b>      | Q8NCE0                               |
| <b>Synonyms</b>       | TRNA Splicing Endonuclease Subunit 2 |

### Product Information

|                      |  |
|----------------------|--|
| <b>Calculated MW</b> | 53 kDa   |
| <b>Observed MW</b>   | Refer to figures   |
| <b>Buffer</b>        | PBS with 0.05% NaN <sub>3</sub> and 40% Glycerol, pH 7.4 |
| <b>Purify</b>        | Antigen affinity purification                            |
| <b>Dilution</b>      | WB 1:1000-1:5000, IHC 1:50-1:300, ELISA 1:5000-1:10000   |

### Background

This gene encodes one of the subunits of the tRNA splicing endonuclease. This endonuclease catalyzes the first step in RNA splicing which is the removal of introns. Mutations in this gene have been associated with pontocerebellar hypoplasia type 2. A pseudogene has been identified on chromosome 4. Multiple transcript variants encoding different isoforms have been found for this gene.

#### For Research Use Only

Thank you for your recent purchase.  
 If you would like to learn more about antibodies, please visit [www.elabscience.com](http://www.elabscience.com).

**Focus on your research  
 Service for life science**

Applications: WB-Western Blot IHC-Immunohistochemistry IF-Immunofluorescence IP-Immunoprecipitation FC-Flow cytometry ChIP-Chromatin Immunoprecipitation Reactivity: H-Human R-Rat M-Mouse Mk-Monkey Dg-Dog Ch-Chicken Hm-Hamster Rb-Rabbit Sh-Sheep Pg-Pig Z-Zebrafish X-Xenopus C-Cow.