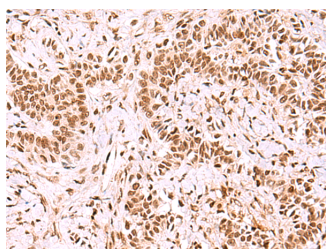


GPKOW Polyclonal Antibody

Catalog No.	E-AB-52972	Reactivity	H
Storage	Store at -20°C. Avoid freeze / thaw cycles.	Host	Rabbit
Applications	IHC,ELISA	Isotype	IgG

Note: Centrifuge before opening to ensure complete recovery of vial contents.

Images



Immunohistochemistry of paraffin-embedded Human ovarian cancer tissue using GPKOW Polyclonal Antibody at dilution of 1:100(×200)

Immunogen Information

Immunogen	Fusion protein of human GPKOW
Gene Accession	BC000397
Swissprot	Q92917
Synonyms	GPATC5,GPATCH5,gpkow,GPKOW,Protein MOS2 homolog,Protein T54,SPP2,T54,T54 protein

Product Information

Buffer	PBS with 0.05% NaN3 and 40% Glycerol,pH7.4
Purify	Antigen affinity purification
Dilution	IHC 1:90-1:450, ELISA 1:5000-1:10000

Background

This gene encodes a putative RNA-binding protein containing G-patch and KOW (Kyprides, Ouzounis, Woese) domains. The encoded protein interacts directly with protein kinase A and protein kinase X and is also found associated with the spliceosome.

For Research Use Only

Thank you for your recent purchase.

If you would like to learn more about antibodies, please visit www.elabscience.com.

**Focus on your research
Service for life science**

Applications:WB-Western Blot IHC-Immunohistochemistry IF-Immunofluorescence IP-Immunoprecipitation FC-Flow cytometry ChIP-Chromatin Immunoprecipitation Reactivity: H-Human R-Rat M-Mouse Mk-Monkey Dg-Dog Ch-Chicken Hm-Hamster Rb-Rabbit Sh-Sheep Pg-Pig Z-Zebrafish X-Xenopus C-Cow.