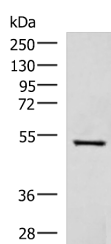


FDXR Polyclonal Antibody

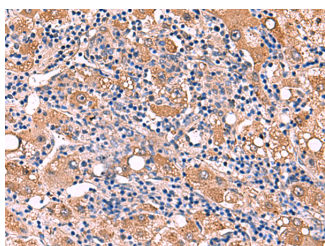
Catalog No.	E-AB-52975	Reactivity	H,M,R
Storage	Store at -20°C. Avoid freeze / thaw cycles.	Host	Rabbit
Applications	WB,IHC,ELISA	Isotype	IgG

Note: Centrifuge before opening to ensure complete recovery of vial contents.

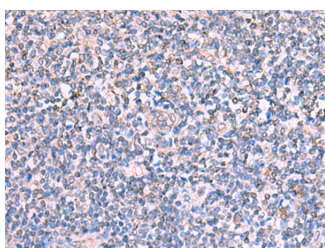
Images



Western blot analysis of HepG2 cell lysate using FDXR Polyclonal Antibody at dilution of 1:1000



Immunohistochemistry of paraffin-embedded Human liver cancer tissue using FDXR Polyclonal Antibody at dilution of 1:110(x200)



Immunohistochemistry of paraffin-embedded Human tonsil tissue using FDXR Polyclonal Antibody at dilution of 1:110(x200)

Immunogen Information

Immunogen	Fusion protein of human FDXR
Gene Accession	BC002960
Swissprot	P22570
Synonyms	Adrenodoxin reductase,ADRO,ADX,AR,FDXR,Ferredoxin reductase,mitochondrial

Product Information

Calculated MW	54 kDa
Observed MW	Refer to figures
Buffer	PBS with 0.05% NaN ₃ and 40% Glycerol,pH7.4
Purify	Antigen affinity purification
Dilution	WB 1:1000-1:5000, IHC 1:100-1:500, ELISA 1:5000-1:10000

Background

This gene encodes a mitochondrial flavoprotein that initiates electron transport for cytochromes P450 receiving electrons from NADPH. Multiple alternatively spliced transcript variants have been found for this gene.

For Research Use Only

Thank you for your recent purchase.
 If you would like to learn more about antibodies, please visit www.elabscience.com.

**Focus on your research
 Service for life science**

Applications:WB-Western Blot IHC-Immunohistochemistry IF-Immunofluorescence IP-Immunoprecipitation FC-Flow cytometry ChIP-Chromatin Immunoprecipitation Reactivity: H-Human R-Rat M-Mouse Mk-Monkey Dg-Dog Ch-Chicken Hm-Hamster Rb-Rabbit Sh-Sheep Pg-Pig Z-Zebrafish X-Xenopus C-Cow.