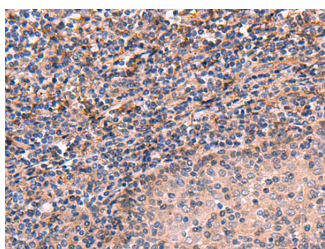


## ARIH2 Polyclonal Antibody

<b>Catalog No.</b>	E-AB-52978	<b>Reactivity</b>	H,M
<b>Storage</b>	Store at -20°C. Avoid freeze / thaw cycles.	<b>Host</b>	Rabbit
<b>Applications</b>	IHC,ELISA	<b>Isotype</b>	IgG

**Note:** Centrifuge before opening to ensure complete recovery of vial contents.

### Images



Immunohistochemistry of paraffin-embedded Human tonsil tissue using ARIH2 Polyclonal Antibody at dilution of 1:70(×200)

### Immunogen Information

<b>Immunogen</b>	Fusion protein of human ARIH2
<b>Gene Accession</b>	BC000422
<b>Swissprot</b>	O95376
<b>Synonyms</b>	Ari 2,Ari-2,ARI2,ARI2,Ariadne 2,ARIH2,Arih2,Triad 1,TRIAD1,Triad1 protein,UIP48

### Product Information

<b>Buffer</b>	PBS with 0.05% NaN <sub>3</sub> and 40% Glycerol,pH7.4
<b>Purify</b>	Antigen affinity purification
<b>Dilution</b>	IHC 1:50-1:300, ELISA 1:5000-1:10000

### Background

TRIAD1, also known as ARIH2 (ariadne homolog 2) or ARI2, is a 493 amino acid protein that contains one IBR-type zinc finger and two RING-type zinc fingers and belongs to the ariadne subfamily of RBR proteins. Localized to the nucleus, TRIAD1 interacts with UBE2L3 and is thought to act as an E3 ubiquitin-protein ligase, functioning to accept ubiquitin from E2 ubiquitin-conjugating enzymes and transfer the acquired ubiquitin residue to target substrates. TRIAD1 is subject to post-translational DNA damage-dependent phosphorylation, probably by ATM or ATR. The gene encoding TRIAD1 maps to human chromosome 3, which houses over 1,100 genes, including a chemokine receptor (CKR) gene cluster and a variety of human cancer-related gene loci.

#### For Research Use Only

Thank you for your recent purchase.  
 If you would like to learn more about antibodies, please visit [www.elabscience.com](http://www.elabscience.com).

**Focus on your research  
 Service for life science**

Applications:WB-Western Blot IHC-Immunohistochemistry IF-Immunofluorescence IP-Immunoprecipitation FC-Flow cytometry ChIP-Chromatin Immunoprecipitation Reactivity: H-Human R-Rat M-Mouse Mk-Monkey Dg-Dog Ch-Chicken Hm-Hamster Rb-Rabbit Sh-Sheep Pg-Pig Z-Zebrafish X-Xenopus C-Cow.