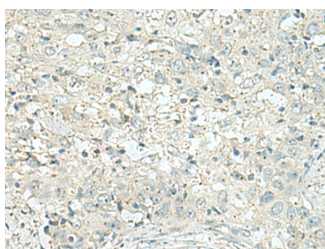


## DENND6A Polyclonal Antibody

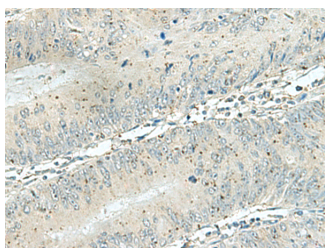
<b>Catalog No.</b>	E-AB-52990	<b>Reactivity</b>	H,M
<b>Storage</b>	Store at -20°C. Avoid freeze / thaw cycles.	<b>Host</b>	Rabbit
<b>Applications</b>	IHC,ELISA	<b>Isotype</b>	IgG

**Note:** Centrifuge before opening to ensure complete recovery of vial contents.

### Images



Immunohistochemistry of paraffin-embedded Human esophagus cancer tissue using DENND6A Polyclonal Antibody at dilution of 1:120(x200)



Immunohistochemistry of paraffin-embedded Human colorectal cancer tissue using DENND6A Polyclonal Antibody at dilution of 1:120(x200)

### Immunogen Information

<b>Immunogen</b>	Fusion protein of human DENND6A
<b>Gene Accession</b>	BC040291
<b>Swissprot</b>	Q8IWF6
<b>Synonyms</b>	F116A,Fam116a, member A ,FLJ34969,hypothetical protein LOC201627,Protein FAM116A

### Product Information

<b>Buffer</b>	PBS with 0.05% NaN <sub>3</sub> and 40% Glycerol,pH7.4
<b>Purify</b>	Antigen affinity purification
<b>Dilution</b>	IHC 1:100-1:200, ELISA 1:5000-1:10000

### Background

Guanine nucleotide exchange factor (GEF) for RAB14. Component of an endocytic recycling pathway that is required for the control of ADAM10 transport, shedding of N-cadherin/CDH2 by ADAM9 or ADAM10 and regulation of cell-cell junctions. Required for RAB14 recruitment to recycling endosomes.

#### For Research Use Only

Thank you for your recent purchase.  
 If you would like to learn more about antibodies, please visit [www.elabscience.com](http://www.elabscience.com).

**Focus on your research  
 Service for life science**

Applications:WB-Western Blot IHC-Immunohistochemistry IF-Immunofluorescence IP-Immunoprecipitation FC-Flow cytometry ChIP-Chromatin Immunoprecipitation Reactivity: H-Human R-Rat M-Mouse Mk-Monkey Dg-Dog Ch-Chicken Hm-Hamster Rb-Rabbit Sh-Sheep Pg-Pig Z-Zebrafish X-Xenopus C-Cow.