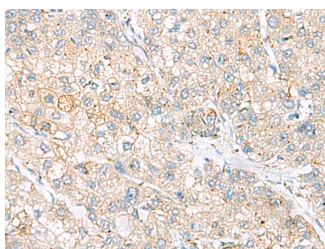


## FARP2 Polyclonal Antibody

<b>Catalog No.</b>	E-AB-52998	<b>Reactivity</b>	H,M
<b>Storage</b>	Store at -20°C. Avoid freeze / thaw cycles.	<b>Host</b>	Rabbit
<b>Applications</b>	IHC,ELISA	<b>Isotype</b>	IgG

**Note:** Centrifuge before opening to ensure complete recovery of vial contents.

### Images



Immunohistochemistry of paraffin-embedded Human liver cancer tissue using FARP2 Polyclonal Antibody at dilution of 1:55(×200)

### Immunogen Information

<b>Immunogen</b>	Fusion protein of human FARP2
<b>Gene Accession</b>	BC021301
<b>Swissprot</b>	O94887
<b>Synonyms</b>	FARP2,FARP2,FERM,FERM,RhoGEF and pleckstrin domain protein 2,FERM,FIR,FRG,KIAA0793,RhoGEF and pleckstrin domain-containing protein 2

### Product Information

<b>Buffer</b>	PBS with 0.05% NaN <sub>3</sub> and 40% Glycerol,pH7.4
<b>Purify</b>	Antigen affinity purification
<b>Dilution</b>	IHC 1:50-1:200, ELISA 1:5000-1:10000

### Background

FARP2 (FERM, ARH/RhoGEF And Pleckstrin Domain Protein 2) is a Protein Coding gene. Diseases associated with FARP2 include Pseudohypoparathyroidism Ia and Aarskog-Scott Syndrome. Among its related pathways are Development Endothelin-1/EDNRA signaling and Focal Adhesion. GO annotations related to this gene include Rho guanyl-nucleotide exchange factor activity and Rac guanyl-nucleotide exchange factor activity. An important paralog of this gene is FARP1.

#### For Research Use Only

Thank you for your recent purchase.  
 If you would like to learn more about antibodies, please visit [www.elabscience.com](http://www.elabscience.com).

**Focus on your research  
 Service for life science**

Applications:WB-Western Blot IHC-Immunohistochemistry IF-Immunofluorescence IP-Immunoprecipitation FC-Flow cytometry ChIP-Chromatin Immunoprecipitation Reactivity: H-Human R-Rat M-Mouse Mk-Monkey Dg-Dog Ch-Chicken Hm-Hamster Rb-Rabbit Sh-Sheep Pg-Pig Z-Zebrafish X-Xenopus C-Cow.