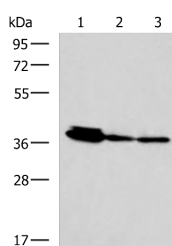


EEF1D Polyclonal Antibody

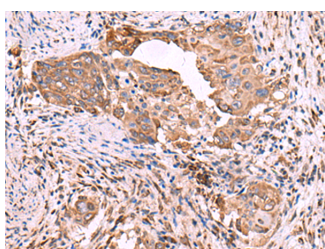
| | | | |
|---------------------|---|-------------------|--------|
| Catalog No. | E-AB-52999 | Reactivity | H,M,R |
| Storage | Store at -20°C. Avoid freeze / thaw cycles. | Host | Rabbit |
| Applications | WB,IHC,ELISA | Isotype | IgG |

Note: Centrifuge before opening to ensure complete recovery of vial contents.

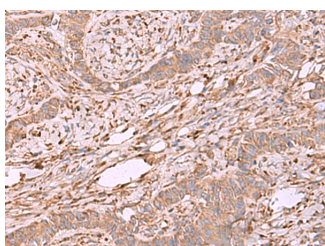
Images



Western blot analysis of HepG2 A172 and A549 cell lysates using EEF1D Polyclonal Antibody at dilution of 1:800



Immunohistochemistry of paraffin-embedded Human cervical cancer tissue using EEF1D Polyclonal Antibody at dilution of 1:55(×200)



Immunohistochemistry of paraffin-embedded Human ovarian cancer tissue using EEF1D Polyclonal Antibody at dilution of 1:55(×200)

Immunogen Information

| | |
|-----------------------|--|
| Immunogen | Fusion protein of human EEF1D |
| Gene Accession | BC007847 |
| Swissprot | P29692 |
| Synonyms | EEF 1D,EEF1D,EF 1 delta,EF 1D,EF-1-delta,EF1D,EF1D,Elongation factor 1 delta,Elongation factor 1-delta |

Product Information

| | |
|----------------------|--|
| Calculated MW | 31 kDa |
| Observed MW | Refer to figures |
| Buffer | PBS with 0.05% NaN ₃ and 40% Glycerol,pH7.4 |
| Purify | Antigen affinity purification |
| Dilution | WB 1:1000-1:5000, IHC 1:50-1:300, ELISA 1:5000-1:10000 |

Background

EEF1D,also named as EF1D and EF 1 delta,belongs to the EF-1-beta/EF-1-delta family. It is a subunit of the elongation factor-1 complex,which is responsible for the enzymatic delivery of aminoacyl tRNAs to the ribosome. EF-1-beta and EF-1-delta stimulate the exchange of GDP bound to EF-1-alpha to GTP. EEF1D is phosphorylated upon DNA damage,probably by ATM or ATR. This antibody is a mouse monoclonal antibody raised against residues near the C terminus of human EEF1D.

For Research Use Only

Thank you for your recent purchase.
 If you would like to learn more about antibodies,please visit www.elabscience.com.

**Focus on your research
 Service for life science**

Applications:WB-Western Blot IHC-Immunohistochemistry IF-Immunofluorescence IP-Immunoprecipitation FC-Flow cytometry ChIP-Chromatin Immunoprecipitation Reactivity: H-Human R-Rat M-Mouse Mk-Monkey Dg-Dog Ch-Chicken Hm-Hamster Rb-Rabbit Sh-Sheep Pg-Pig Z-Zebrafish X-Xenopus C-Cow.