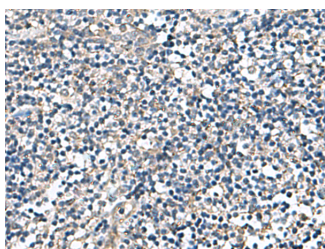


DPY19L3 Polyclonal Antibody

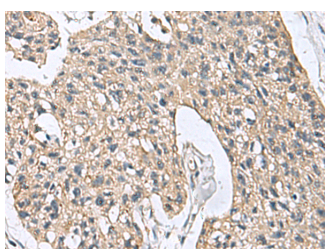
Catalog No.	E-AB-53013	Reactivity	H
Storage	Store at -20°C. Avoid freeze / thaw cycles.	Host	Rabbit
Applications	IHC,ELISA	Isotype	IgG

Note: Centrifuge before opening to ensure complete recovery of vial contents.

Images



Immunohistochemistry of paraffin-embedded Human tonsil tissue using DPY19L3 Polyclonal Antibody at dilution of 1:110(×200)



Immunohistochemistry of paraffin-embedded Human esophagus cancer tissue using DPY19L3 Polyclonal Antibody at dilution of 1:110(×200)

Immunogen Information

Immunogen	Fusion protein of human DPY19L3
Gene Accession	BC029162
Swissprot	Q6ZPD9
Synonyms	D19L3,DKFZp686J17135,Dpy-19-like 3 (C. elegans),Dpy-19-like protein 3,Dpy19l3,MGC35440,Protein dpy-19 homolog 3

Product Information

Buffer	PBS with 0.05% NaN ₃ and 40% Glycerol,pH7.4
Purify	Antigen affinity purification
Dilution	IHC 1:100-1:300, ELISA 1:5000-1:10000

Background

Probable C-mannosyltransferase that mediates C-mannosylation of tryptophan residues on target proteins.

For Research Use Only

Thank you for your recent purchase.
 If you would like to learn more about antibodies, please visit www.elabscience.com.

**Focus on your research
 Service for life science**

Applications:WB-Western Blot IHC-Immunohistochemistry IF-Immunofluorescence IP-Immunoprecipitation FC-Flow cytometry ChIP-Chromatin Immunoprecipitation Reactivity: H-Human R-Rat M-Mouse Mk-Monkey Dg-Dog Ch-Chicken Hm-Hamster Rb-Rabbit Sh-Sheep Pg-Pig Z-Zebrafish X-Xenopus C-Cow.