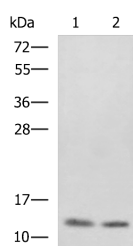


PHF5A Polyclonal Antibody

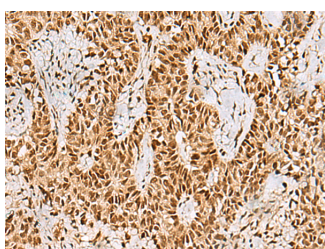
Catalog No.	E-AB-53018	Reactivity	H,M,R
Storage	Store at -20°C. Avoid freeze / thaw cycles.	Host	Rabbit
Applications	WB,IHC,ELISA	Isotype	IgG

Note: Centrifuge before opening to ensure complete recovery of vial contents.

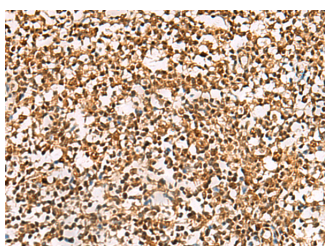
Images



Western blot analysis of SKOV3 and Raji cell lysates using PHF5A Polyclonal Antibody at dilution of 1:800



Immunohistochemistry of paraffin-embedded Human ovarian cancer tissue using PHF5A Polyclonal Antibody at dilution of 1:55(×200)



Immunohistochemistry of paraffin-embedded Human tonsil tissue using PHF5A Polyclonal Antibody at dilution of 1:55(×200)

Immunogen Information

Immunogen	Fusion protein of human PHF5A
Gene Accession	BC007321
Swissprot	Q7RTV0
Synonyms	Ac2 246,bK223H9.2,INI,MGC1346,PHD finger 5a,Phf5a,PHF5A,Rds3,SAP14b,SF3b14b

Product Information

Calculated MW	12 kDa
Observed MW	Refer to figures
Buffer	PBS with 0.05% NaN ₃ and 40% Glycerol,pH7.4
Purify	Antigen affinity purification
Dilution	WB 1:500-1:2000, IHC 1:50-1:200, ELISA 1:5000-1:10000

Background

This gene encodes a subunit of the splicing factor 3b protein complex. Splicing factor 3b, together with splicing factor 3a and a 12S RNA unit, forms the U2 small nuclear ribonucleoproteins complex (U2 snRNP). The splicing factor 3b/3a complex binds pre-mRNA upstream of the intron's branch site in a sequence-independent manner and may anchor the U2 snRNP to the pre-mRNA. The protein encoded by this gene contains a PHD-finger-like domain that is flanked by highly basic N- and C-termini. This protein belongs to the PHD-finger superfamily and may act as a chromatin-associated protein. This gene has several pseudogenes on different chromosomes.

For Research Use Only

Thank you for your recent purchase.
 If you would like to learn more about antibodies, please visit www.elabscience.com.

**Focus on your research
 Service for life science**

Applications:WB-Western Blot IHC-Immunohistochemistry IF-Immunofluorescence IP-Immunoprecipitation FC-Flow cytometry ChIP-Chromatin Immunoprecipitation Reactivity: H-Human R-Rat M-Mouse Mk-Monkey Dg-Dog Ch-Chicken Hm-Hamster Rb-Rabbit Sh-Sheep Pg-Pig Z-Zebrafish X-Xenopus C-Cow.