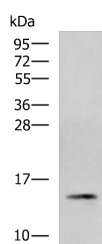


PHPT1 Polyclonal Antibody

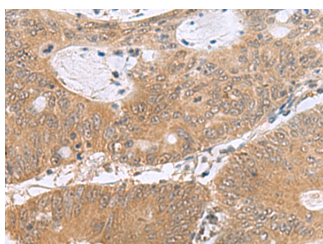
Catalog No.	E-AB-53026	Reactivity	H,M
Storage	Store at -20°C. Avoid freeze / thaw cycles.	Host	Rabbit
Applications	WB,IHC,ELISA	Isotype	IgG

Note: Centrifuge before opening to ensure complete recovery of vial contents.

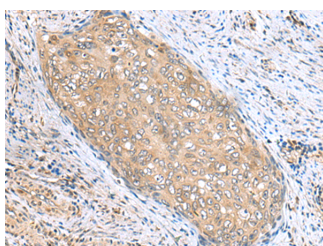
Images



Western blot analysis of 231 cell lysate using PHPT1 Polyclonal Antibody at dilution of 1:800



Immunohistochemistry of paraffin-embedded Human colorectal cancer tissue using PHPT1 Polyclonal Antibody at dilution of 1:170(x200)



Immunohistochemistry of paraffin-embedded Human cervical cancer tissue using PHPT1 Polyclonal Antibody at dilution of 1:170(x200)

Immunogen Information

Immunogen	Fusion protein of human PHPT1
Gene Accession	BC024648
Swissprot	Q9NRX4
Synonyms	CGI 202,HSPC141,PHP14,PHPT1,Protein janus-A homolog,Sex regulated protein janus a

Product Information

Calculated MW	14 kDa
Observed MW	Refer to figures
Buffer	PBS with 0.05% NaN ₃ and 40% Glycerol,pH7.4
Purify	Antigen affinity purification
Dilution	WB 1:1000-1:5000, IHC 1:200-1:300, ELISA 1:5000-1:10000

Background

This gene encodes an enzyme that catalyzes the reversible dephosphorylation of histidine residues in proteins. It may be involved in the dephosphorylation of G-beta and ATP citrate lyase and in negatively regulating CD4 T lymphocytes by dephosphorylation and inhibition of KCa3.1 channels. Alternative splicing results in multiple transcript variants.

For Research Use Only

Thank you for your recent purchase.
 If you would like to learn more about antibodies, please visit www.elabscience.com.

**Focus on your research
 Service for life science**

Applications:WB-Western Blot IHC-Immunohistochemistry IF-Immunofluorescence IP-Immunoprecipitation FC-Flow cytometry ChIP-Chromatin Immunoprecipitation Reactivity: H-Human R-Rat M-Mouse Mk-Monkey Dg-Dog Ch-Chicken Hm-Hamster Rb-Rabbit Sh-Sheep Pg-Pig Z-Zebrafish X-Xenopus C-Cow.