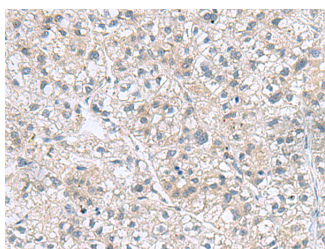


GEMIN7 Polyclonal Antibody

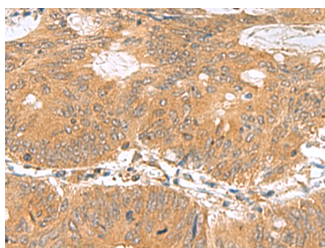
Catalog No.	E-AB-53032	Reactivity	H,M
Storage	Store at -20°C. Avoid freeze / thaw cycles.	Host	Rabbit
Applications	IHC,ELISA	Isotype	IgG

Note: Centrifuge before opening to ensure complete recovery of vial contents.

Images



Immunohistochemistry of paraffin-embedded Human liver cancer tissue using GEMIN7 Polyclonal Antibody at dilution of 1:70(×200)



Immunohistochemistry of paraffin-embedded Human colorectal cancer tissue using GEMIN7 Polyclonal Antibody at dilution of 1:70(×200)

Immunogen Information

Immunogen	Fusion protein of human GEMIN7
Gene Accession	BC007793
Swissprot	Q9H840
Synonyms	gem (nuclear organelle) associated protein 7,gem-associated protein 7,gemin 7,SIP3

Product Information

Buffer	PBS with 0.05% NaN ₃ and 40% Glycerol,pH7.4
Purify	Antigen affinity purification
Dilution	IHC 1:100-1:200, ELISA 1:5000-1:10000

Background

The protein encoded by this gene is a component of the core SMN complex, which is required for pre-mRNA splicing in the nucleus. The encoded protein is found in the nucleoplasm, in nuclear "gems" (Gemini of Cajal bodies), and in the cytoplasm. Three transcript variants encoding the same protein have been found for this gene.

For Research Use Only

Thank you for your recent purchase.
 If you would like to learn more about antibodies, please visit www.elabscience.com.

**Focus on your research
 Service for life science**

Applications:WB-Western Blot IHC-Immunohistochemistry IF-Immunofluorescence IP-Immunoprecipitation FC-Flow cytometry ChIP-Chromatin Immunoprecipitation Reactivity: H-Human R-Rat M-Mouse Mk-Monkey Dg-Dog Ch-Chicken Hm-Hamster Rb-Rabbit Sh-Sheep Pg-Pig Z-Zebrafish X-Xenopus C-Cow.