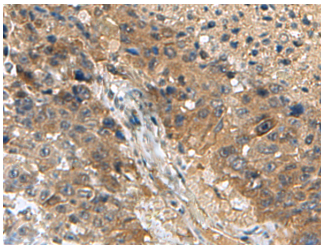


TPD52L3 Polyclonal Antibody

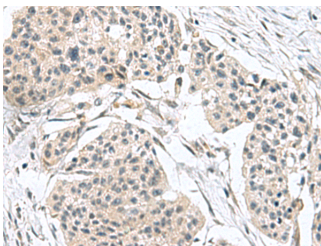
Catalog No.	E-AB-53036	Reactivity	H
Storage	Store at -20°C. Avoid freeze / thaw cycles.	Host	Rabbit
Applications	IHC,ELISA	Isotype	IgG

Note: Centrifuge before opening to ensure complete recovery of vial contents.

Images



Immunohistochemistry of paraffin-embedded Human liver cancer tissue using TPD52L3 Polyclonal Antibody at dilution of 1:140(×200)



Immunohistochemistry of paraffin-embedded Human esophagus cancer tissue using TPD52L3 Polyclonal Antibody at dilution of 1:140(×200)

Immunogen Information

Immunogen	Fusion protein of human TPD52L3
Gene Accession	BC017589
Swissprot	Q96J77
Synonyms	Tumor Protein D52 Like 3, Tumor Protein D55, Testis Development Protein NYD-SP25, HD55

Product Information

Buffer	PBS with 0.05% NaN ₃ and 40% Glycerol, pH7.4
Purify	Antigen affinity purification
Dilution	IHC 1:150-1:300, ELISA 1:5000-1:10000

Background

This gene encodes a member of the tumor protein D52-like family of proteins. These proteins are characterized by an N-terminal coiled-coil motif that is used to form homo- and heteromeric complexes with other tumor protein D52-like proteins. The encoded protein may play a role in spermatogenesis. Alternative splicing results in multiple transcript variants.

For Research Use Only

Thank you for your recent purchase.
 If you would like to learn more about antibodies, please visit www.elabscience.com.

**Focus on your research
 Service for life science**

Applications: WB-Western Blot IHC-Immunohistochemistry IF-Immunofluorescence IP-Immunoprecipitation FC-Flow cytometry ChIP-Chromatin Immunoprecipitation Reactivity: H-Human R-Rat M-Mouse Mk-Monkey Dg-Dog Ch-Chicken Hm-Hamster Rb-Rabbit Sh-Sheep Pg-Pig Z-Zebrafish X-Xenopus C-Cow.