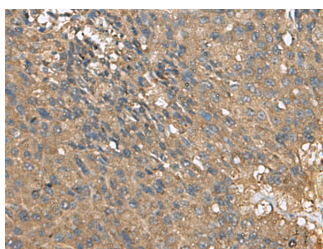


## EIF1AX Polyclonal Antibody

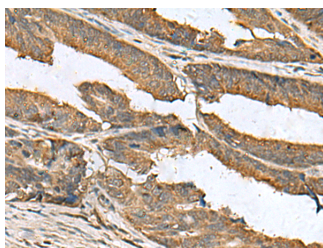
<b>Catalog No.</b>	E-AB-53041	<b>Reactivity</b>	H,M
<b>Storage</b>	Store at -20°C. Avoid freeze / thaw cycles.	<b>Host</b>	Rabbit
<b>Applications</b>	IHC,ELISA	<b>Isotype</b>	IgG

**Note:** Centrifuge before opening to ensure complete recovery of vial contents.

### Images



Immunohistochemistry of paraffin-embedded Human liver cancer tissue using EIF1AX Polyclonal Antibody at dilution of 1:105(×200)



Immunohistochemistry of paraffin-embedded Human colorectal cancer tissue using EIF1AX Polyclonal Antibody at dilution of 1:105(×200)

### Immunogen Information

<b>Immunogen</b>	Fusion protein of human EIF1AX
<b>Gene Accession</b>	BC000793
<b>Swissprot</b>	P47813
<b>Synonyms</b>	eIF-1A,eIF-4C,EIF1A,EIF1AP1,EIF1AX,EIF4C

### Product Information

<b>Buffer</b>	PBS with 0.05% NaN3 and 40% Glycerol,pH7.4
<b>Purify</b>	Antigen affinity purification
<b>Dilution</b>	IHC 1:100-1:300, ELISA 1:5000-1:10000

### Background

This gene encodes an essential eukaryotic translation initiation factor. The protein is required for the binding of the 43S complex (a 40S subunit, eIF2/GTP/Met-tRNA<sub>i</sub> and eIF3) to the 5' end of capped RNA.

#### For Research Use Only

Thank you for your recent purchase.

If you would like to learn more about antibodies, please visit [www.elabscience.com](http://www.elabscience.com).

**Focus on your research  
Service for life science**

Applications:WB-Western Blot IHC-Immunohistochemistry IF-Immunofluorescence IP-Immunoprecipitation FC-Flow cytometry ChIP-Chromatin Immunoprecipitation Reactivity: H-Human R-Rat M-Mouse Mk-Monkey Dg-Dog Ch-Chicken Hm-Hamster Rb-Rabbit Sh-Sheep Pg-Pig Z-Zebrafish X-Xenopus C-Cow.