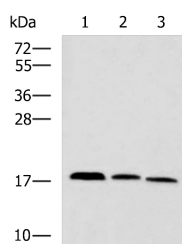


CPLX3 Polyclonal Antibody

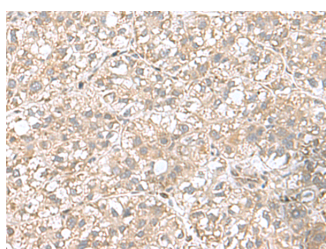
Catalog No.	E-AB-53051	Reactivity	H,M,R
Storage	Store at -20°C. Avoid freeze / thaw cycles.	Host	Rabbit
Applications	WB,IHC,ELISA	Isotype	IgG

Note: Centrifuge before opening to ensure complete recovery of vial contents.

Images



Western blot analysis of Mouse kidney tissue Rat brain tissue Mouse liver tissue lysates using CPLX3 Polyclonal Antibody at dilution of 1:950



Immunohistochemistry of paraffin-embedded Human liver cancer tissue using CPLX3 Polyclonal Antibody at dilution of 1:65(×200)

Immunogen Information

Immunogen	Fusion protein of human CPLX3
Gene Accession	BC018026
Swissprot	Q8WVH0
Synonyms	Complexin 3,Complexin III,Complexin-3,CPLX3,CPLX3,CPX III,CPX-III,CPXIII,ERGIC 53L,ERGL,FLJ13993,Lamn11,Nbla11589

Product Information

Calculated MW	17 kDa
Observed MW	Refer to figures
Buffer	PBS with 0.05% NaN ₃ and 40% Glycerol,pH7.4
Purify	Antigen affinity purification
Dilution	WB 1:1000-1:5000, IHC 1:50-1:200, ELISA 1:5000-1:10000

Background

Positively regulates a late step in synaptic vesicle exocytosis.

For Research Use Only

Thank you for your recent purchase.
 If you would like to learn more about antibodies, please visit www.elabscience.com.

**Focus on your research
 Service for life science**

Applications:WB-Western Blot IHC-Immunohistochemistry IF-Immunofluorescence IP-Immunoprecipitation FC-Flow cytometry ChIP-Chromatin Immunoprecipitation Reactivity: H-Human R-Rat M-Mouse Mk-Monkey Dg-Dog Ch-Chicken Hm-Hamster Rb-Rabbit Sh-Sheep Pg-Pig Z-Zebrafish X-Xenopus C-Cow.