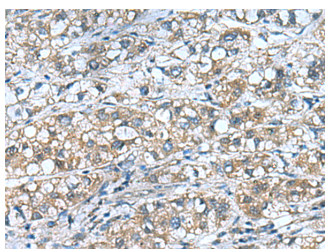


COMMD9 Polyclonal Antibody

| | | | |
|---------------------|---|-------------------|--------|
| Catalog No. | E-AB-53075 | Reactivity | H,M |
| Storage | Store at -20°C. Avoid freeze / thaw cycles. | Host | Rabbit |
| Applications | IHC,ELISA | Isotype | IgG |

Note: Centrifuge before opening to ensure complete recovery of vial contents.

Images



Immunohistochemistry of paraffin-embedded Human liver cancer tissue using COMMD9 Polyclonal Antibody at dilution of 1:55(×200)

Immunogen Information

| | |
|-----------------------|--|
| Immunogen | Fusion protein of human COMMD9 |
| Gene Accession | BC010892 |
| Swissprot | Q9P000 |
| Synonyms | COMD9,COMM domain containing 9,COMM domain-containing protein 9,COMMD9,HSPC166 |

Product Information

| | |
|-----------------|--|
| Buffer | PBS with 0.05% NaN3 and 40% Glycerol,pH7.4 |
| Purify | Antigen affinity purification |
| Dilution | IHC 1:50-1:200, ELISA 1:5000-1:10000 |

Background

May modulate activity of cullin-RING E3 ubiquitin ligase (CRL) complexes (PubMed:21778237). May down-regulate activation of NF-kappa-B (PubMed:15799966). Modulates Na⁺ transport in epithelial cells by regulation of apical cell surface expression of amiloride-sensitive sodium channel (ENaC) subunits (PubMed:23637203).

For Research Use Only

Thank you for your recent purchase.

If you would like to learn more about antibodies, please visit www.elabscience.com.

**Focus on your research
Service for life science**

Applications:WB-Western Blot IHC-Immunohistochemistry IF-Immunofluorescence IP-Immunoprecipitation FC-Flow cytometry ChIP-Chromatin Immunoprecipitation Reactivity: H-Human R-Rat M-Mouse Mk-Monkey Dg-Dog Ch-Chicken Hm-Hamster Rb-Rabbit Sh-Sheep Pg-Pig Z-Zebrafish X-Xenopus C-Cow.