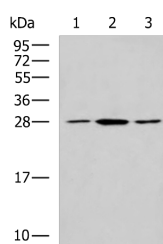


CLTB Polyclonal Antibody

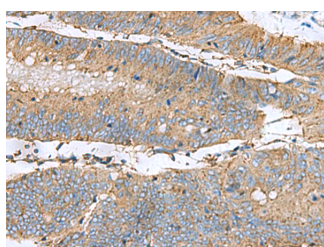
Catalog No.	E-AB-53085	Reactivity	H,M
Storage	Store at -20°C. Avoid freeze / thaw cycles.	Host	Rabbit
Applications	WB,IHC,ELISA	Isotype	IgG

Note: Centrifuge before opening to ensure complete recovery of vial contents.

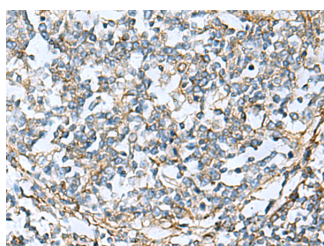
Images



Western blot analysis of NIH/3T3 LO2 and Jurkat cell lysates using CLTB Polyclonal Antibody at dilution of 1:800



Immunohistochemistry of paraffin-embedded Human colorectal cancer tissue using CLTB Polyclonal Antibody at dilution of 1:60(x200)



Immunohistochemistry of paraffin-embedded Human tonsil tissue using CLTB Polyclonal Antibody at dilution of 1:60(x200)

Immunogen Information

Immunogen	Fusion protein of human CLTB
Gene Accession	BC006332
Swissprot	P09497
Synonyms	Clathrin Light Chain B, Clathrin, Light Polypeptide (Lcb), LCB, Clathrin, Light Chain (Lcb), Clathrin, Light Chain B.

Product Information

Calculated MW	25 kDa
Observed MW	Refer to figures
Buffer	PBS with 0.05% NaN ₃ and 40% Glycerol, pH7.4
Purify	Antigen affinity purification
Dilution	WB 1:500-1:2000, IHC 1:50-1:200, ELISA 1:5000-1:10000

Background

Clathrin is the major protein of the polyhedral coat of coated pits and vesicles which entrap specific macromolecules during receptor-mediated endocytosis. The clathrin molecule has a triskelion shape. Each clathrin triskelion is composed of three identical heavy chains (180 kDa) and three light chains of two types, LCA (CLTA) and LCB (CLTB) (30-40 kDa). The light chain subunits are thought to regulate the formation or disassembly of clathrin coats.

For Research Use Only

Thank you for your recent purchase.
 If you would like to learn more about antibodies, please visit www.elabscience.com.

**Focus on your research
 Service for life science**

Applications: WB-Western Blot IHC-Immunohistochemistry IF-Immunofluorescence IP-Immunoprecipitation FC-Flow cytometry ChIP-Chromatin Immunoprecipitation Reactivity: H-Human R-Rat M-Mouse Mk-Monkey Dg-Dog Ch-Chicken Hm-Hamster Rb-Rabbit Sh-Sheep Pg-Pig Z-Zebrafish X-Xenopus C-Cow.