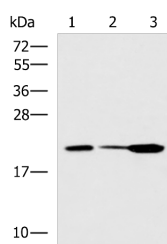


PPIC Polyclonal Antibody

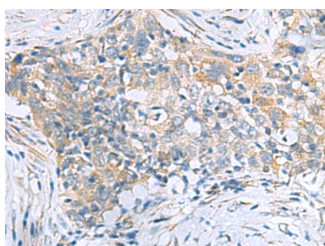
Catalog No.	E-AB-53088	Reactivity	H,M
Storage	Store at -20°C. Avoid freeze / thaw cycles.	Host	Rabbit
Applications	WB,IHC,ELISA	Isotype	IgG

Note: Centrifuge before opening to ensure complete recovery of vial contents.

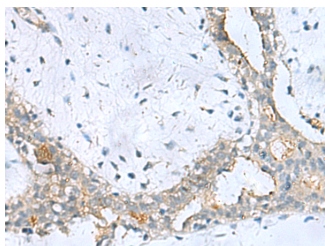
Images



Western blot analysis of Mouse small intestines tissue Mouse kidney tissue Mouse pancreas tissue lysates using PPIC Polyclonal Antibody at dilution of 1:550



Immunohistochemistry of paraffin-embedded Human esophagus cancer tissue using PPIC Polyclonal Antibody at dilution of 1:50(×200)



Immunohistochemistry of paraffin-embedded Human breast cancer tissue using PPIC Polyclonal Antibody at dilution of 1:50(×200)

Immunogen Information

Immunogen	Fusion protein of human PPIC
Gene Accession	BC002678
Swissprot	P45877
Synonyms	Cyclophilin C,CYPC,peptidylprolyl isomerase C,PPIase C,ppiC,PPIC,Rotamase C

Product Information

Calculated MW	23 kDa
Observed MW	Refer to figures
Buffer	PBS with 0.05% NaN ₃ and 40% Glycerol,pH7.4
Purify	Antigen affinity purification
Dilution	WB 1:500-1:2000, IHC 1:50-1:100, ELISA 1:5000-1:10000

Background

The protein encoded by this gene is a member of the peptidyl-prolyl cis-trans isomerase (PPIase) family. PPIases catalyze the cis-trans isomerization of proline imidic peptide bonds in oligopeptides and accelerate the folding of proteins. Similar to other PPIases, this protein can bind immunosuppressant cyclosporin A.

For Research Use Only

Thank you for your recent purchase.
 If you would like to learn more about antibodies, please visit www.elabscience.com.

**Focus on your research
 Service for life science**

Applications:WB-Western Blot IHC-Immunohistochemistry IF-Immunofluorescence IP-Immunoprecipitation FC-Flow cytometry ChIP-Chromatin Immunoprecipitation Reactivity: H-Human R-Rat M-Mouse Mk-Monkey Dg-Dog Ch-Chicken Hm-Hamster Rb-Rabbit Sh-Sheep Pg-Pig Z-Zebrafish X-Xenopus C-Cow.