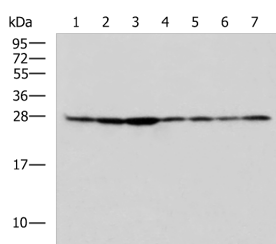


RPL10A Polyclonal Antibody

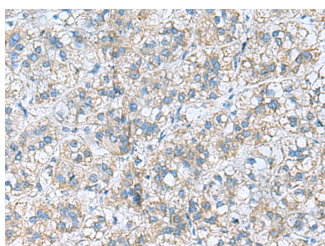
Catalog No.	E-AB-53094	Reactivity	H,M,R
Storage	Store at -20°C. Avoid freeze / thaw cycles.	Host	Rabbit
Applications	WB,IHC,ELISA	Isotype	IgG

Note: Centrifuge before opening to ensure complete recovery of vial contents.

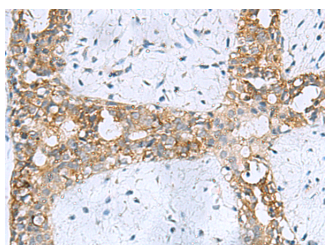
Images



Western blot analysis of HepG2, HeLa, Jurkat, HUVEC, mouse lung tissue, mouse kidney tissue, and rat liver tissue lysates using RPL10A Polyclonal Antibody at dilution of 1:700.



Immunohistochemistry of paraffin-embedded human liver cancer tissue using RPL10A Polyclonal Antibody at dilution of 1:50 (x200).



Immunohistochemistry of paraffin-embedded human breast cancer tissue using RPL10A Polyclonal Antibody at dilution of 1:50 (x200).

Immunogen Information

Immunogen	Fusion protein of human RPL10A
Gene Accession	BC006791
Swissprot	P62906
Synonyms	60S ribosomal protein L10a, CSA19, CSA-19, CSA19, L10A, NEDD6, NEDD-6, NEDD6

Product Information

Calculated MW	25 kDa
Observed MW	Refer to figures
Buffer	PBS with 0.05% NaN ₃ and 40% Glycerol, pH 7.4
Purify	Antigen affinity purification
Dilution	WB 1:500-1:2000, IHC 1:50-1:200, ELISA 1:5000-1:10000

Background

Ribosomes, the organelles that catalyze protein synthesis, consist of a small 40S subunit and a large 60S subunit. Together these subunits are composed of 4 RNA species and approximately 80 structurally distinct proteins. This gene encodes a ribosomal protein that is a component of the 60S subunit. The protein belongs to the L1P family of ribosomal proteins. It is located in the cytoplasm. The expression of this gene is downregulated in the thymus by cyclosporin-A (CsA), an immunosuppressive drug. Studies in mice have shown that the expression of the ribosomal protein L10a gene is downregulated in neural precursor cells during development. This gene previously was referred to as NEDD6 (neural precursor cell expressed, developmentally downregulated 6), but it has been renamed RPL10A (ribosomal protein 10a). As is typical for genes encoding ribosomal proteins, there are multiple processed pseudogenes of this gene dispersed through the genome.

For Research Use Only

Thank you for your recent purchase.
 If you would like to learn more about antibodies, please visit www.elabscience.com.

Focus on your research
Service for life science

Applications: WB-Western Blot, IHC-Immunohistochemistry, IF-Immunofluorescence, IP-Immunoprecipitation, FC-Flow cytometry, ChIP-Chromatin Immunoprecipitation. Reactivity: H-Human, R-Rat, M-Mouse, Mk-Monkey, Dg-Dog, Ch-Chicken, Hm-Hamster, Rb-Rabbit, Sh-Sheep, Pg-Pig, Z-Zebrafish, X-Xenopus, C-Cow.