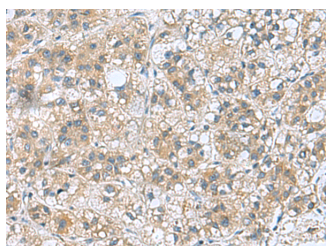


RAB39A Polyclonal Antibody

Catalog No.	E-AB-53095	Reactivity	H,M
Storage	Store at -20°C. Avoid freeze / thaw cycles.	Host	Rabbit
Applications	IHC,ELISA	Isotype	IgG

Note: Centrifuge before opening to ensure complete recovery of vial contents.

Images



Immunohistochemistry of paraffin-embedded Human liver cancer tissue using RAB39A Polyclonal Antibody at dilution of 1:70(×200)

Immunogen Information

Immunogen	Fusion protein of human RAB39A
Gene Accession	BC028064
Swissprot	Q14964
Synonyms	rab related GTP binding protein ,Rab-39,Rab39,RAB39A,RAB39A member RAS oncogene family,Ras related protein Rab39A ,Ras-related protein Rab-39A,RB39A

Product Information

Buffer	PBS with 0.05% NaN ₃ and 40% Glycerol,pH7.4
Purify	Antigen affinity purification
Dilution	IHC 1:50-1:200, ELISA 1:5000-1:10000

Background

Plays a role in the maturation and acidification of phagosomes that engulf pathogens, such as *S.aureus* and *M.tuberculosis*. Plays a role in vesicular trafficking. Plays a role in the fusion of phagosomes with lysosomes. Negatively regulates LPS-induced autophagosome formation in macrophages possibly by implicating PI3K (PubMed:24349490). May be involved in multiple neurite formation (By similarity).

For Research Use Only

Thank you for your recent purchase.
 If you would like to learn more about antibodies, please visit www.elabscience.com.

**Focus on your research
 Service for life science**

Applications:WB-Western Blot IHC-Immunohistochemistry IF-Immunofluorescence IP-Immunoprecipitation FC-Flow cytometry ChIP-Chromatin Immunoprecipitation Reactivity: H-Human R-Rat M-Mouse Mk-Monkey Dg-Dog Ch-Chicken Hm-Hamster Rb-Rabbit Sh-Sheep Pg-Pig Z-Zebrafish X-Xenopus C-Cow.