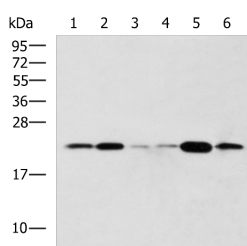


## TMED10 Polyclonal Antibody

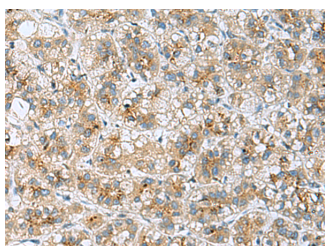
<b>Catalog No.</b>	E-AB-53096	<b>Reactivity</b>	H,M,R
<b>Storage</b>	Store at -20°C. Avoid freeze / thaw cycles.	<b>Host</b>	Rabbit
<b>Applications</b>	WB,IHC,ELISA	<b>Isotype</b>	IgG

**Note:** Centrifuge before opening to ensure complete recovery of vial contents.

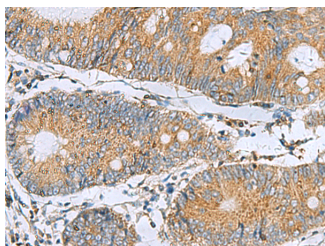
### Images



Western blot analysis of Raji Hela cell Mouse liver tissue Rat lung tissue Mouse Pancreas tissue NIH/3T3 cell lysates using TMED10 Polyclonal Antibody at dilution of 1:800



Immunohistochemistry of paraffin-embedded Human liver cancer tissue using TMED10 Polyclonal Antibody at dilution of 1:50(×200)



Immunohistochemistry of paraffin-embedded Human colorectal cancer tissue using TMED10 Polyclonal Antibody at dilution of 1:50(×200)

### Immunogen Information

<b>Immunogen</b>	Fusion protein of human TMED10
<b>Gene Accession</b>	BC001496
<b>Swissprot</b>	P49755
<b>Synonyms</b>	p24delta,p24delta1,TMED 10,Tmed10,TMEDA,Tmp 21 I,Tmp 21,Tmp 21 I,Tmp-21-I

### Product Information

<b>Calculated MW</b>	25 kDa
<b>Observed MW</b>	Refer to figures
<b>Buffer</b>	PBS with 0.05% NaN <sub>3</sub> and 40% Glycerol,pH7.4
<b>Purify</b>	Antigen affinity purification
<b>Dilution</b>	WB 1:500-1:2000, IHC 1:50-1:200, ELISA 1:5000-1:10000

### Background

This gene is a member of the EMP24/GP25L/p24 family and encodes a protein with a GOLD domain. This type I membrane protein is localized to the plasma membrane and golgi cisternae and is involved in vesicular protein trafficking. The protein is also a member of a heteromeric secretase complex and regulates the complex's gamma-secretase activity without affecting its epsilon-secretase activity. Mutations in this gene have been associated with early-onset familial Alzheimer's disease. This gene has a pseudogene on chromosome 8.

### For Research Use Only

Thank you for your recent purchase.  
 If you would like to learn more about antibodies, please visit [www.elabscience.com](http://www.elabscience.com).

**Focus on your research  
 Service for life science**

Applications:WB-Western Blot IHC-Immunohistochemistry IF-Immunofluorescence IP-Immunoprecipitation FC-Flow cytometry ChIP-Chromatin Immunoprecipitation Reactivity: H-Human R-Rat M-Mouse Mk-Monkey Dg-Dog Ch-Chicken Hm-Hamster Rb-Rabbit Sh-Sheep Pg-Pig Z-Zebrafish X-Xenopus C-Cow.