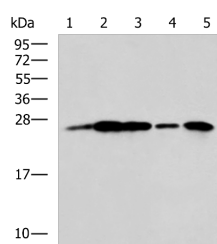


## UCHL1 Polyclonal Antibody

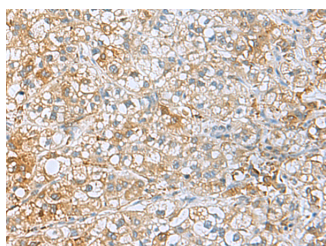
<b>Catalog No.</b>	E-AB-53097	<b>Reactivity</b>	H,M,R
<b>Storage</b>	Store at -20°C. Avoid freeze / thaw cycles.	<b>Host</b>	Rabbit
<b>Applications</b>	WB,IHC,ELISA	<b>Isotype</b>	IgG

**Note:** Centrifuge before opening to ensure complete recovery of vial contents.

### Images



Western blot analysis of A549 cell Rat brain tissue Mouse brain tissue A172 cell Human cerebrum tissue lysates using UCHL1 Polyclonal Antibody at dilution of 1:800



Immunohistochemistry of paraffin-embedded Human liver cancer tissue using UCHL1 Polyclonal Antibody at dilution of 1:50(×200)

### Immunogen Information

<b>Immunogen</b>	Fusion protein of human UCHL1
<b>Gene Accession</b>	BC000332
<b>Swissprot</b>	P09936
<b>Synonyms</b>	HEL 117,HEL S 53,NDGOA, Park 5,PARK5,PGP 9.5,PGP9.5,PGP95,UCH-L1,UCHL1,UCHL1

### Product Information

<b>Calculated MW</b>	25 kDa
<b>Observed MW</b>	Refer to figures
<b>Buffer</b>	PBS with 0.05% NaN <sub>3</sub> and 40% Glycerol,pH7.4
<b>Purify</b>	Antigen affinity purification
<b>Dilution</b>	WB 1:1000-1:5000, IHC 1:50-1:200, ELISA 1:5000-1:10000

### Background

UCHL1(Ubiquitin carboxyl-terminal hydrolase isozyme L1) is a member of a gene family whose products hydrolyze small C-terminal adducts of ubiquitin to generate the ubiquitin monomer. Expression of UCHL1 is highly specific to neurons and to cells of the diffuse neuroendocrine system and their tumors. It is present in all neurons. This protein is present in brain at concentrations at least 50 times greater than in other organs and is a major protein component of neuronal cytoplasm . And UCHL1 is a Parkinson's disease susceptibility gene .

#### For Research Use Only

Thank you for your recent purchase.  
 If you would like to learn more about antibodies, please visit [www.elabscience.com](http://www.elabscience.com).

**Focus on your research  
 Service for life science**

Applications:WB-Western Blot IHC-Immunohistochemistry IF-Immunofluorescence IP-Immunoprecipitation FC-Flow cytometry ChIP-Chromatin Immunoprecipitation Reactivity: H-Human R-Rat M-Mouse Mk-Monkey Dg-Dog Ch-Chicken Hm-Hamster Rb-Rabbit Sh-Sheep Pg-Pig Z-Zebrafish X-Xenopus C-Cow.