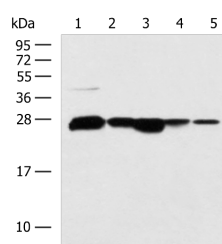


CCDC134 Polyclonal Antibody

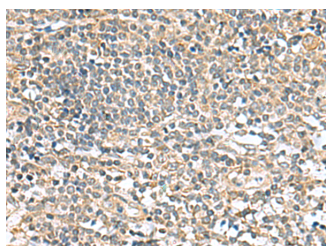
Catalog No.	E-AB-53098	Reactivity	H,M,R
Storage	Store at -20°C. Avoid freeze / thaw cycles.	Host	Rabbit
Applications	WB,IHC,ELISA	Isotype	IgG

Note: Centrifuge before opening to ensure complete recovery of vial contents.

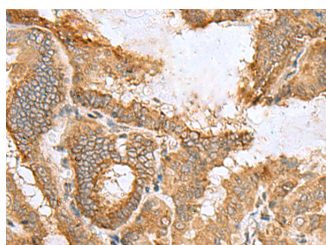
Images



Western blot analysis of 293T HepG2 cell Human fetal liver tissue Human liver tissue TM4 cell lysates using CCDC134 Polyclonal Antibody at dilution of 1:800



Immunohistochemistry of paraffin-embedded Human tonsil tissue using CCDC134 Polyclonal Antibody at dilution of 1:50(×200)



Immunohistochemistry of paraffin-embedded Human thyroid cancer tissue using CCDC134 Polyclonal Antibody at dilution of 1:50(×200)

Immunogen Information

Immunogen	Fusion protein of human CCDC134
Gene Accession	BC017693
Swissprot	Q9H6E4
Synonyms	CC134_HUMAN,ccdc134,coiled-coil domain containing 134,Coiled-coil domain-containing protein 134,dJ821D11.3,FLJ22349,MGC21013

Product Information

Calculated MW	27 kDa
Observed MW	Refer to figures
Buffer	PBS with 0.05% NaN ₃ and 40% Glycerol,pH7.4
Purify	Antigen affinity purification
Dilution	WB 1:1000-1:5000, IHC 1:50-1:200, ELISA 1:5000-1:10000

Background

CCDC134 (Coiled-Coil Domain Containing 134) is a Protein Coding gene.

For Research Use Only

Thank you for your recent purchase.
 If you would like to learn more about antibodies, please visit www.elabscience.com.

**Focus on your research
 Service for life science**

Applications:WB-Western Blot IHC-Immunohistochemistry IF-Immunofluorescence IP-Immunoprecipitation FC-Flow cytometry ChIP-Chromatin Immunoprecipitation Reactivity: H-Human R-Rat M-Mouse Mk-Monkey Dg-Dog Ch-Chicken Hm-Hamster Rb-Rabbit Sh-Sheep Pg-Pig Z-Zebrafish X-Xenopus C-Cow.