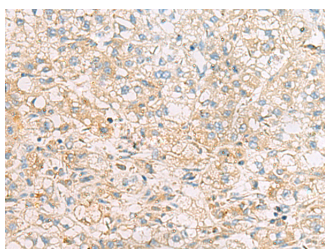


EIF4E2 Polyclonal Antibody

Catalog No.	E-AB-53109	Reactivity	H,M
Storage	Store at -20°C. Avoid freeze / thaw cycles.	Host	Rabbit
Applications	IHC,ELISA	Isotype	IgG

Note: Centrifuge before opening to ensure complete recovery of vial contents.

Images



Immunohistochemistry of paraffin-embedded Human liver cancer tissue using EIF4E2 Polyclonal Antibody at dilution of 1:50(×200)

Immunogen Information

Immunogen	Fusion protein of human EIF4E2
Gene Accession	BC005392
Swissprot	O60573
Synonyms	Eukaryotic Translation Initiation Factor 4E Type 2,MRNA Cap-Binding Protein Type 3

Product Information

Buffer	PBS with 0.05% NaN3 and 40% Glycerol,pH7.4
Purify	Antigen affinity purification
Dilution	IHC 1:50-1:200, ELISA 1:5000-1:10000

Background

EIF4E2 (Eukaryotic Translation Initiation Factor 4E Family Member 2) is a Protein Coding gene. Among its related pathways are Regulation of lipid metabolism Insulin signaling-generic cascades and mTOR signaling pathway (KEGG). Gene Ontology (GO) annotations related to this gene include ubiquitin protein ligase binding. An important paralog of this gene is EIF4E.

For Research Use Only

Thank you for your recent purchase.
 If you would like to learn more about antibodies, please visit www.elabscience.com.

**Focus on your research
 Service for life science**

Applications:WB-Western Blot IHC-Immunohistochemistry IF-Immunofluorescence IP-Immunoprecipitation FC-Flow cytometry ChIP-Chromatin Immunoprecipitation Reactivity: H-Human R-Rat M-Mouse Mk-Monkey Dg-Dog Ch-Chicken Hm-Hamster Rb-Rabbit Sh-Sheep Pg-Pig Z-Zebrafish X-Xenopus C-Cow.