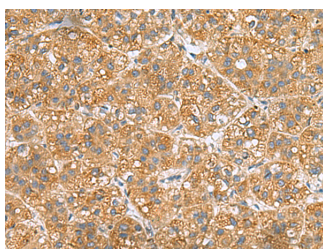


## PPM1M Polyclonal Antibody

<b>Catalog No.</b>	E-AB-53113	<b>Reactivity</b>	H,M
<b>Storage</b>	Store at -20°C. Avoid freeze / thaw cycles.	<b>Host</b>	Rabbit
<b>Applications</b>	IHC,ELISA	<b>Isotype</b>	IgG

**Note:** Centrifuge before opening to ensure complete recovery of vial contents.

### Images



Immunohistochemistry of paraffin-embedded Human liver cancer tissue using PPM1M Polyclonal Antibody at dilution of 1:50(×200)

### Immunogen Information

<b>Immunogen</b>	Fusion protein of human PPM1M
<b>Gene Accession</b>	BC009644
<b>Swissprot</b>	Q96MI6
<b>Synonyms</b>	PP2C eta,PP2C-eta,PP2CE,PP2Ceta,PPM1M,PPM1M,Protein phosphatase 2C isoform eta

### Product Information

<b>Buffer</b>	PBS with 0.05% NaN <sub>3</sub> and 40% Glycerol,pH7.4
<b>Purify</b>	Antigen affinity purification
<b>Dilution</b>	IHC 1:50-1:200, ELISA 1:5000-1:10000

### Background

PPM1M is a member of the PP2C family of Ser/Thr protein phosphatases. PP2C family members are known to be negative regulators of cell stress response pathways. This phosphatase was identified as an interacting protein of Rho guanine nucleotide exchange factors (PIX). PIX proteins are regulators of p21/Cdc42/Rac1-activated kinase 1 (PAK1), a protein kinase mediating biological effects downstream of Rho GTPases. This phosphatase has been shown to block the effects of PAK, and thus inhibit actin stress fiber breakdown and morphological changes driven by cell division cycle 42 (CDC42).

#### For Research Use Only

Thank you for your recent purchase.  
 If you would like to learn more about antibodies, please visit [www.elabscience.com](http://www.elabscience.com).

**Focus on your research  
 Service for life science**

Applications:WB-Western Blot IHC-Immunohistochemistry IF-Immunofluorescence IP-Immunoprecipitation FC-Flow cytometry ChIP-Chromatin Immunoprecipitation Reactivity: H-Human R-Rat M-Mouse Mk-Monkey Dg-Dog Ch-Chicken Hm-Hamster Rb-Rabbit Sh-Sheep Pg-Pig Z-Zebrafish X-Xenopus C-Cow.