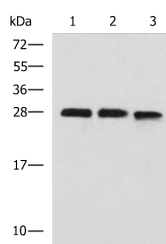


## PLEKHF2 Polyclonal Antibody

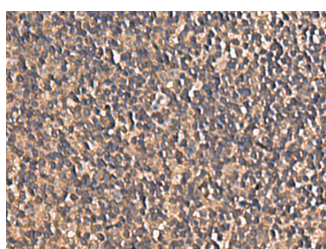
<b>Catalog No.</b>	E-AB-53115	<b>Reactivity</b>	H,M
<b>Storage</b>	Store at -20°C. Avoid freeze / thaw cycles.	<b>Host</b>	Rabbit
<b>Applications</b>	WB,IHC,ELISA	<b>Isotype</b>	IgG

**Note:** Centrifuge before opening to ensure complete recovery of vial contents.

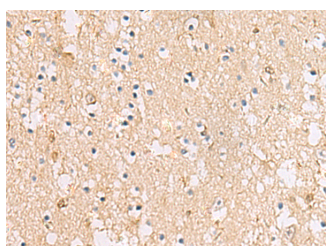
### Images



Western blot analysis of 293T and K562 cell lysates using PLEKHF2 Polyclonal Antibody at dilution of 1:1400



Immunohistochemistry of paraffin-embedded Human tonsil tissue using PLEKHF2 Polyclonal Antibody at dilution of 1:85(×200)



Immunohistochemistry of paraffin-embedded Human brain tissue using PLEKHF2 Polyclonal Antibody at dilution of 1:85(×200)

### Immunogen Information

<b>Immunogen</b>	Fusion protein of human PLEKHF2
<b>Gene Accession</b>	BC011806
<b>Swissprot</b>	Q9H8W4
<b>Synonyms</b>	110070J07Rik,AA673237,FLJ13187,Phafin 2,Phafin-2,PHAFIN2,PKHF2,Plekhf2,ZFYVE18

### Product Information

<b>Calculated MW</b>	28 kDa
<b>Observed MW</b>	Refer to figures
<b>Buffer</b>	PBS with 0.05% NaN <sub>3</sub> and 40% Glycerol,pH7.4
<b>Purify</b>	Antigen affinity purification
<b>Dilution</b>	WB 1:1000-1:5000, IHC 1:100-1:200, ELISA 1:5000-1:10000

### Background

May play a role in early endosome fusion upstream of RAB5, hence regulating receptor trafficking and fluid-phase transport. Enhances cellular sensitivity to TNF-induced apoptosis (PubMed:18288467).

#### For Research Use Only

Thank you for your recent purchase.  
 If you would like to learn more about antibodies, please visit [www.elabscience.com](http://www.elabscience.com).

**Focus on your research  
 Service for life science**

Applications:WB-Western Blot IHC-Immunohistochemistry IF-Immunofluorescence IP-Immunoprecipitation FC-Flow cytometry ChIP-Chromatin Immunoprecipitation Reactivity: H-Human R-Rat M-Mouse Mk-Monkey Dg-Dog Ch-Chicken Hm-Hamster Rb-Rabbit Sh-Sheep Pg-Pig Z-Zebrafish X-Xenopus C-Cow.