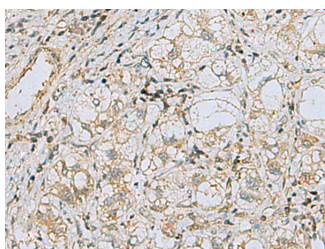


RAB3IP Polyclonal Antibody

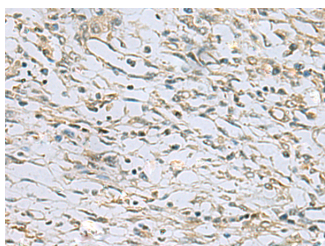
Catalog No.	E-AB-53118	Reactivity	H,M,R
Storage	Store at -20°C. Avoid freeze / thaw cycles.	Host	Rabbit
Applications	IHC,ELISA	Isotype	IgG

Note: Centrifuge before opening to ensure complete recovery of vial contents.

Images



Immunohistochemistry of paraffin-embedded Human liver cancer tissue using RAB3IP Polyclonal Antibody at dilution of 1:60(×200)



Immunohistochemistry of paraffin-embedded Human prostate cancer tissue using RAB3IP Polyclonal Antibody at dilution of 1:60(×200)

Immunogen Information

Immunogen	Fusion protein of human RAB3IP
Gene Accession	BC015548
Swissprot	Q96QF0
Synonyms	Gtpat12,RAB3I,Rab3ip,Rabin3,Rabin-3,RABIN3,RABIN3,rat,homolog of,Rabin8,SSX2 interacting protein

Product Information

Buffer	PBS with 0.05% NaN ₃ and 40% Glycerol,pH7.4
Purify	Antigen affinity purification
Dilution	IHC 1:50-1:100, ELISA 1:5000-1:10000

Background

RAB3IP (RAB3A Interacting Protein) is a Protein Coding gene. Among its related pathways are Organelle biogenesis and maintenance and Vesicle-mediated transport. Gene Ontology (GO) annotations related to this gene include Rab guanyl-nucleotide exchange factor activity. An important paralog of this gene is RAB3IL1.

For Research Use Only

Thank you for your recent purchase.
 If you would like to learn more about antibodies, please visit www.elabscience.com.

**Focus on your research
 Service for life science**

Applications:WB-Western Blot IHC-Immunohistochemistry IF-Immunofluorescence IP-Immunoprecipitation FC-Flow cytometry ChIP-Chromatin Immunoprecipitation Reactivity: H-Human R-Rat M-Mouse Mk-Monkey Dg-Dog Ch-Chicken Hm-Hamster Rb-Rabbit Sh-Sheep Pg-Pig Z-Zebrafish X-Xenopus C-Cow.