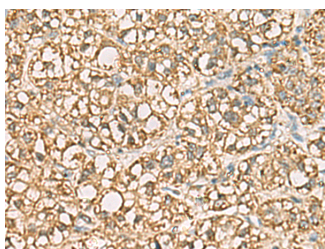


## VTA1 Polyclonal Antibody

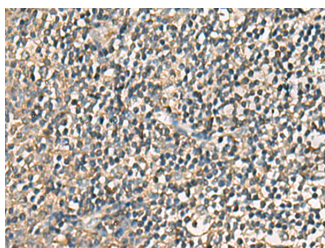
<b>Catalog No.</b>	E-AB-53134	<b>Reactivity</b>	H,M
<b>Storage</b>	Store at -20°C. Avoid freeze / thaw cycles.	<b>Host</b>	Rabbit
<b>Applications</b>	IHC,ELISA	<b>Isotype</b>	IgG

**Note:** Centrifuge before opening to ensure complete recovery of vial contents.

### Images



Immunohistochemistry of paraffin-embedded Human liver cancer tissue using VTA1 Polyclonal Antibody at dilution of 1:85(×200)



Immunohistochemistry of paraffin-embedded Human tonsil tissue using VTA1 Polyclonal Antibody at dilution of 1:85(×200)

### Immunogen Information

<b>Immunogen</b>	Fusion protein of human VTA1
<b>Gene Accession</b>	BC005937
<b>Swissprot</b>	Q9NP79
<b>Synonyms</b>	C6orf55,DRG 1,DRG-1,DRG1,HSPC228,LIP5,Myo12,SBP1,SKD1-binding protein 1,VTA1,VTA1

### Product Information

<b>Buffer</b>	PBS with 0.05% NaN <sub>3</sub> and 40% Glycerol,pH7.4
<b>Purify</b>	Antigen affinity purification
<b>Dilution</b>	IHC 1:50-1:200, ELISA 1:5000-1:10000

### Background

C6ORF55 encodes a protein involved in trafficking of the multivesicular body, an endosomal compartment involved in sorting membrane proteins for degradation in lysosomes (Ward et al., 2005 [PubMed 15644320]).

#### For Research Use Only

Thank you for your recent purchase.  
 If you would like to learn more about antibodies, please visit [www.elabscience.com](http://www.elabscience.com).

**Focus on your research  
 Service for life science**

Applications:WB-Western Blot IHC-Immunohistochemistry IF-Immunofluorescence IP-Immunoprecipitation FC-Flow cytometry ChIP-Chromatin Immunoprecipitation Reactivity: H-Human R-Rat M-Mouse Mk-Monkey Dg-Dog Ch-Chicken Hm-Hamster Rb-Rabbit Sh-Sheep Pg-Pig Z-Zebrafish X-Xenopus C-Cow.