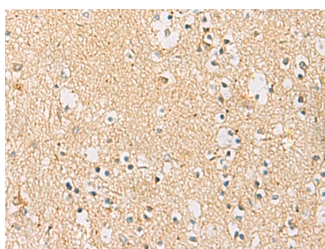


## IDS Polyclonal Antibody

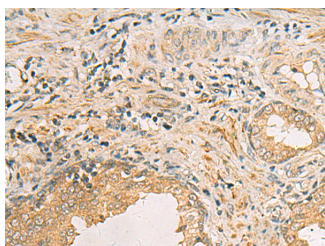
<b>Catalog No.</b>	E-AB-53138	<b>Reactivity</b>	H,M
<b>Storage</b>	Store at -20°C. Avoid freeze / thaw cycles.	<b>Host</b>	Rabbit
<b>Applications</b>	IHC,ELISA	<b>Isotype</b>	IgG

**Note:** Centrifuge before opening to ensure complete recovery of vial contents.

### Images



Immunohistochemistry of paraffin-embedded Human brain tissue using IDS Polyclonal Antibody at dilution of 1:70(×200)



Immunohistochemistry of paraffin-embedded Human prostate cancer tissue using IDS Polyclonal Antibody at dilution of 1:70(×200)

### Immunogen Information

<b>Immunogen</b>	Fusion protein of human IDS
<b>Gene Accession</b>	BC006170
<b>Swissprot</b>	P22304
<b>Synonyms</b>	Ids,IDS,Iduronate 2 sulfatase 14 kDa chain,Idursulfase,MPS2,RP23-29M4.1,SIDS

### Product Information

<b>Buffer</b>	PBS with 0.05% NaN <sub>3</sub> and 40% Glycerol,pH7.4
<b>Purify</b>	Antigen affinity purification
<b>Dilution</b>	IHC 1:50-1:200, ELISA 1:5000-1:10000

### Background

Iduronate 2-sulfatase (IDS) is required for the lysosomal degradation of heparan sulfate and dermatan sulfate. Mutations causing IDS deficiency in humans result in the lysosomal storage of these glycosaminoglycans and Hunter syndrome,an X chromosome-linked disease. An internal proteolytic cleavage occurs to produce the mature IDS present in human liver shown to contain a 42 kDa polypeptide N-terminal to a 14 kDa polypeptide..

#### For Research Use Only

Thank you for your recent purchase.  
 If you would like to learn more about antibodies,please visit [www.elabscience.com](http://www.elabscience.com).

**Focus on your research  
 Service for life science**

Applications:WB-Western Blot IHC-Immunohistochemistry IF-Immunofluorescence IP-Immunoprecipitation FC-Flow cytometry ChIP-Chromatin Immunoprecipitation Reactivity: H-Human R-Rat M-Mouse Mk-Monkey Dg-Dog Ch-Chicken Hm-Hamster Rb-Rabbit Sh-Sheep Pg-Pig Z-Zebrafish X-Xenopus C-Cow.