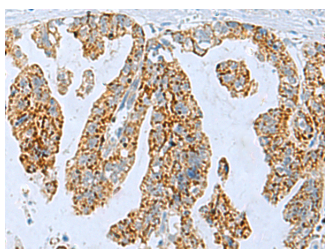


PYCR2 Polyclonal Antibody

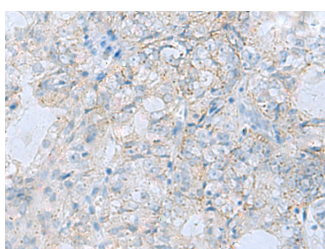
Catalog No.	E-AB-53146	Reactivity	H,M,R
Storage	Store at -20°C. Avoid freeze / thaw cycles.	Host	Rabbit
Applications	IHC,ELISA	Isotype	IgG

Note: Centrifuge before opening to ensure complete recovery of vial contents.

Images



Immunohistochemistry of paraffin-embedded Human gastric cancer tissue using PYCR2 Polyclonal Antibody at dilution of 1:35(×200)



Immunohistochemistry of paraffin-embedded Human ovarian cancer tissue using PYCR2 Polyclonal Antibody at dilution of 1:35(×200)

Immunogen Information

Immunogen	Fusion protein of human PYCR2
Gene Accession	BC014868
Swissprot	Q96C36
Synonyms	1810018M05Rik,FLJ54750,Leftb,P5CR2,P5CR2,P5CR2,PYCR 2,PYCR2,RP4-559A3.4

Product Information

Buffer	PBS with 0.05% NaN3 and 40% Glycerol,pH7.4
Purify	Antigen affinity purification
Dilution	IHC 1:50-1:100, ELISA 1:5000-1:10000

Background

This gene belongs to the pyrroline-5-carboxylate reductase family. The encoded mitochondrial protein catalyzes the conversion of pyrroline-5-carboxylate to proline, which is the last step in proline biosynthesis. Alternatively spliced transcript variants have been described for this gene.

For Research Use Only

Thank you for your recent purchase.
 If you would like to learn more about antibodies, please visit www.elabscience.com.

**Focus on your research
 Service for life science**

Applications:WB-Western Blot IHC-Immunohistochemistry IF-Immunofluorescence IP-Immunoprecipitation FC-Flow cytometry ChIP-Chromatin Immunoprecipitation Reactivity: H-Human R-Rat M-Mouse Mk-Monkey Dg-Dog Ch-Chicken Hm-Hamster Rb-Rabbit Sh-Sheep Pg-Pig Z-Zebrafish X-Xenopus C-Cow.