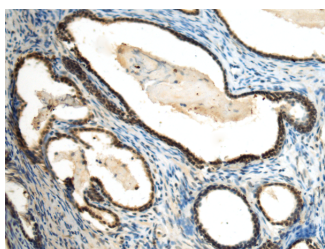


SUV39H2 Polyclonal Antibody

Catalog No.	E-AB-53163	Reactivity	H,M
Storage	Store at -20°C. Avoid freeze / thaw cycles.	Host	Rabbit
Applications	IHC,ELISA	Isotype	IgG

Note: Centrifuge before opening to ensure complete recovery of vial contents.

Images



Immunohistochemistry of paraffin-embedded Human prostate cancer tissue using SUV39H2 Polyclonal Antibody at dilution of 1:70(×200)

Immunogen Information

Immunogen	Fusion protein of human SUV39H2
Gene Accession	BC007754
Swissprot	Q9H5I1
Synonyms	FLJ23414,H3 K9 HMTase 2,KMT1B,Suppressor of variegation 3-9 homolog 2,Suv39h2,SUV92

Product Information

Buffer	PBS with 0.05% NaN ₃ and 40% Glycerol,pH7.4
Purify	Antigen affinity purification
Dilution	IHC 1:50-1:200, ELISA 1:5000-1:10000

Background

SUV39H2 (Suppressor Of Variegation 3-9 Homolog 2) is a Protein Coding gene. Among its related pathways are Circadian rhythm related genes and Lysine degradation. GO annotations related to this gene include chromatin binding and transcription regulatory region sequence-specific DNA binding. An important paralog of this gene is SUV39H1.

For Research Use Only

Thank you for your recent purchase.
 If you would like to learn more about antibodies, please visit www.elabscience.com.

**Focus on your research
 Service for life science**

Applications:WB-Western Blot IHC-Immunohistochemistry IF-Immunofluorescence IP-Immunoprecipitation FC-Flow cytometry ChIP-Chromatin Immunoprecipitation Reactivity: H-Human R-Rat M-Mouse Mk-Monkey Dg-Dog Ch-Chicken Hm-Hamster Rb-Rabbit Sh-Sheep Pg-Pig Z-Zebrafish X-Xenopus C-Cow.