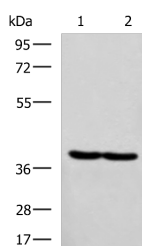


RBM4 Polyclonal Antibody

Catalog No.	E-AB-53174	Reactivity	H,M
Storage	Store at -20°C. Avoid freeze / thaw cycles.	Host	Rabbit
Applications	WB,ELISA	Isotype	IgG

Note: Centrifuge before opening to ensure complete recovery of vial contents.

Images



Western blot analysis of Hela and MCF7 cell lysates using RBM4 Polyclonal Antibody at dilution of 1:750

Immunogen Information

Immunogen	Fusion protein of human RBM4
Gene Accession	BC032735
Swissprot	Q9BWF3
Synonyms	RBM4,rbm4 lark,RBM4,RNA binding motif 4,RNA binding motif 4a

Product Information

Calculated MW	40 kDa
Observed MW	Refer to figures
Buffer	PBS with 0.05% NaN ₃ and 40% Glycerol,pH7.4
Purify	Antigen affinity purification
Dilution	WB 1:500-1:2000, ELISA 1:5000-1:10000

Background

RBM4,RNA-binding motif protein4,contains 2 RRM-type RNA-binding motif and a retroviral-type(RT) zinc finger. RNA-binding factor participates in number of aspects of cellular processes such as alternative splicing of pre-mRNA and translation regulation. RBM4 recruits eIF4A1 to stimulate IRES-dependent translation in responds to cellular stress. Once assembled at the rHRE,the HIF2A-RBM4-eIF4E2 complex captures the 5-prime cap and targets mRNAs to polysomes for active translation,thereby evading hypoxia-induced repression of protein synthesis.

For Research Use Only

Thank you for your recent purchase.
 If you would like to learn more about antibodies,please visit www.elabscience.com.

**Focus on your research
 Service for life science**

Applications:WB-Western Blot IHC-Immunohistochemistry IF-Immunofluorescence IP-Immunoprecipitation FC-Flow cytometry ChIP-Chromatin Immunoprecipitation Reactivity: H-Human R-Rat M-Mouse Mk-Monkey Dg-Dog Ch-Chicken Hm-Hamster Rb-Rabbit Sh-Sheep Pg-Pig Z-Zebrafish X-Xenopus C-Cow.