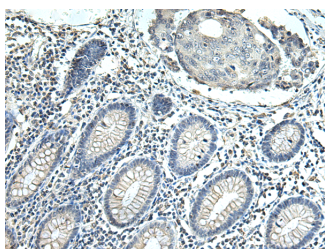


SLC35F6 Polyclonal Antibody

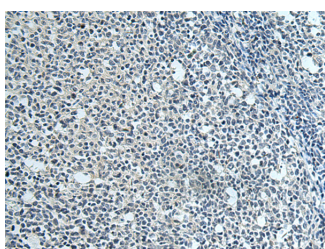
Catalog No.	E-AB-53176	Reactivity	H,M,R
Storage	Store at -20°C. Avoid freeze / thaw cycles.	Host	Rabbit
Applications	IHC,ELISA	Isotype	IgG

Note: Centrifuge before opening to ensure complete recovery of vial contents.

Images



Immunohistochemistry of paraffin-embedded Human colorectal cancer tissue using SLC35F6 Polyclonal Antibody at dilution of 1:115(×200)



Immunohistochemistry of paraffin-embedded Human tonsil tissue using SLC35F6 Polyclonal Antibody at dilution of 1:115(×200)

Immunogen Information

Immunogen	Fusion protein of human SLC35F6
Gene Accession	BC028081
Swissprot	Q8N357
Synonyms	ANT2 binding protein,ANT2BP,Chromosome 2 open reading frame 18,FLJ20555

Product Information

Buffer	PBS with 0.05% NaN3 and 40% Glycerol,pH7.4
Purify	Antigen affinity purification
Dilution	IHC 1:100-1:300, ELISA 1:5000-1:10000

Background

Involved in the maintenance of mitochondrial membrane potential in pancreatic ductal adenocarcinoma (PDAC) cells. Promotes pancreatic ductal adenocarcinoma (PDAC) cell growth. May play a role as a nucleotide-sugar transporter.

For Research Use Only

Thank you for your recent purchase.
 If you would like to learn more about antibodies, please visit www.elabscience.com.

**Focus on your research
 Service for life science**

Applications:WB-Western Blot IHC-Immunohistochemistry IF-Immunofluorescence IP-Immunoprecipitation FC-Flow cytometry ChIP-Chromatin Immunoprecipitation Reactivity: H-Human R-Rat M-Mouse Mk-Monkey Dg-Dog Ch-Chicken Hm-Hamster Rb-Rabbit Sh-Sheep Pg-Pig Z-Zebrafish X-Xenopus C-Cow.