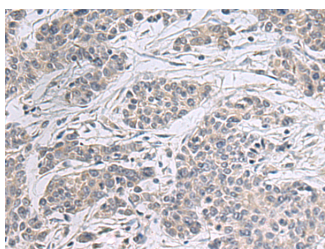


## PPM1K Polyclonal Antibody

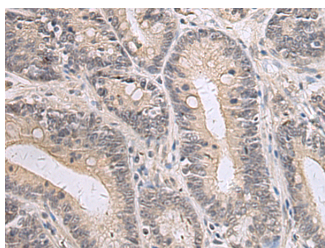
<b>Catalog No.</b>	E-AB-53177	<b>Reactivity</b>	H,M
<b>Storage</b>	Store at -20°C. Avoid freeze / thaw cycles.	<b>Host</b>	Rabbit
<b>Applications</b>	IHC,ELISA	<b>Isotype</b>	IgG

**Note:** Centrifuge before opening to ensure complete recovery of vial contents.

### Images



Immunohistochemistry of paraffin-embedded Human colorectal cancer tissue using PPM1K Polyclonal Antibody at dilution of 1:55(×200)



Immunohistochemistry of paraffin-embedded Human gastric cancer tissue using PPM1K Polyclonal Antibody at dilution of 1:55(×200)

### Immunogen Information

<b>Immunogen</b>	Fusion protein of human PPM1K
<b>Gene Accession</b>	BC037552
<b>Swissprot</b>	Q8N3J5
<b>Synonyms</b>	BDP,mitochondrial,MSUDMV,PP2Ckappa,PP2CM,PPM1K,PPM1K,UG0882E07

### Product Information

<b>Buffer</b>	PBS with 0.05% NaN <sub>3</sub> and 40% Glycerol,pH7.4
<b>Purify</b>	Antigen affinity purification
<b>Dilution</b>	IHC 1:50-1:100, ELISA 1:5000-1:10000

### Background

This gene encodes a member of the PPM family of Mn<sup>2+</sup>/Mg<sup>2+</sup>-dependent protein phosphatases. The encoded protein, essential for cell survival and development, is targeted to the mitochondria where it plays a key role in regulation of the mitochondrial permeability transition pore.PPM1K (Protein Phosphatase, Mg<sup>2+</sup>/Mn<sup>2+</sup> Dependent 1K) is a Protein Coding gene. Diseases associated with PPM1K include Maple Syrup Urine Disease, Mild Variant and Intermediate Maple Syrup Urine Disease. Among its related pathways are Valine, leucine and isoleucine degradation and Viral mRNA Translation. GO annotations related to this gene include protein serine/threonine phosphatase activity. An important paralog of this gene is PPM1E.

#### For Research Use Only

Thank you for your recent purchase.  
 If you would like to learn more about antibodies,please visit [www.elabscience.com](http://www.elabscience.com).

**Focus on your research  
 Service for life science**

Applications:WB-Western Blot IHC-Immunohistochemistry IF-Immunofluorescence IP-Immunoprecipitation FC-Flow cytometry ChIP-Chromatin Immunoprecipitation Reactivity: H-Human R-Rat M-Mouse Mk-Monkey Dg-Dog Ch-Chicken Hm-Hamster Rb-Rabbit Sh-Sheep Pg-Pig Z-Zebrafish X-Xenopus C-Cow.