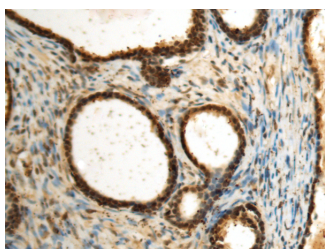


SEPHS1 Polyclonal Antibody

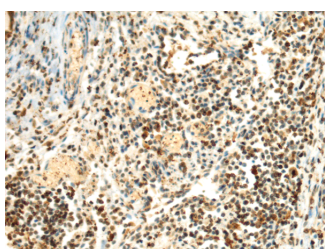
Catalog No.	E-AB-53184	Reactivity	H,M
Storage	Store at -20°C. Avoid freeze / thaw cycles.	Host	Rabbit
Applications	IHC,ELISA	Isotype	IgG

Note: Centrifuge before opening to ensure complete recovery of vial contents.

Images



Immunohistochemistry of paraffin-embedded Human prostate cancer tissue using SEPHS1 Polyclonal Antibody at dilution of 1:85 (x200)



Immunohistochemistry of paraffin-embedded Human lung cancer tissue using SEPHS1 Polyclonal Antibody at dilution of 1:85 (x200)

Immunogen Information

Immunogen	Fusion protein of human SEPHS1
Gene Accession	BC000941
Swissprot	P49903
Synonyms	MGC4980, SELD, Selenide, water dikinase 1, Selenium donor protein 1, Selenophosphate synthetase 1, SEPHS1, SPS, SPS1

Product Information

Buffer	PBS with 0.05% NaN ₃ and 40% Glycerol, pH 7.4
Purify	Antigen affinity purification
Dilution	IHC 1:100-1:300, ELISA 1:5000-1:10000

Background

This gene encodes an enzyme that synthesizes selenophosphate from selenide and ATP. Selenophosphate is the selenium donor used to synthesize selenocysteine, which is co-translationally incorporated into selenoproteins at in-frame UGA codons.

For Research Use Only

Thank you for your recent purchase.
If you would like to learn more about antibodies, please visit www.elabscience.com.

**Focus on your research
Service for life science**

Applications: WB-Western Blot IHC-Immunohistochemistry IF-Immunofluorescence IP-Immunoprecipitation FC-Flow cytometry ChIP-Chromatin Immunoprecipitation Reactivity: H-Human R-Rat M-Mouse Mk-Monkey Dg-Dog Ch-Chicken Hm-Hamster Rb-Rabbit Sh-Sheep Pg-Pig Z-Zebrafish X-Xenopus C-Cow.