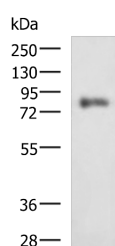


PRKCSH Polyclonal Antibody

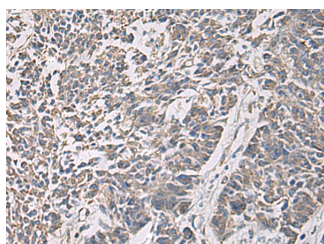
Catalog No.	E-AB-53187	Reactivity	H,M
Storage	Store at -20°C. Avoid freeze / thaw cycles.	Host	Rabbit
Applications	WB,IHC,ELISA	Isotype	IgG

Note: Centrifuge before opening to ensure complete recovery of vial contents.

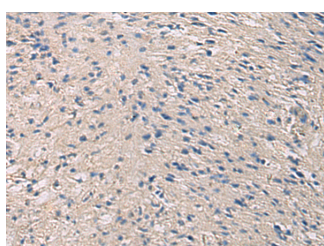
Images



Western blot analysis of HepG2 cell lysate using PRKCSH Polyclonal Antibody at dilution of 1:1350



Immunohistochemistry of paraffin-embedded Human colorectal cancer tissue using PRKCSH Polyclonal Antibody at dilution of 1:90(×200)



Immunohistochemistry of paraffin-embedded Human brain tissue using PRKCSH Polyclonal Antibody at dilution of 1:90(×200)

Immunogen Information

Immunogen	Fusion protein of human PRKCSH
Gene Accession	BC013586
Swissprot	P14314
Synonyms	AGE-R2,G19P1,GLU2B,Hepatocystin,PCLD,PKCSH,PLD1,PRKCSH,80 Kda protein

Product Information

Calculated MW	59 kDa
Observed MW	Refer to figures
Buffer	PBS with 0.05% NaN ₃ and 40% Glycerol,pH7.4
Purify	Antigen affinity purification
Dilution	WB 1:500-1:2000, IHC 1:100-1:300, ELISA 1:5000-1:10000

Background

This gene encodes the beta-subunit of glucosidase II, an N-linked glycan-processing enzyme in the endoplasmic reticulum. The encoded protein is an acidic phosphoprotein known to be a substrate for protein kinase C. Mutations in this gene have been associated with the autosomal dominant polycystic liver disease. Alternative splicing results in multiple transcript variants. PRKCSH (Protein Kinase C Substrate 80K-H) is a Protein Coding gene. Diseases associated with PRKCSH include Polycystic Liver Disease and Polycystic Kidney And Hepatic Disease. Among its related pathways are Advanced glycosylation endproduct receptor signaling and Innate Immune System. GO annotations related to this gene include calcium ion binding and ion channel binding.

For Research Use Only

Thank you for your recent purchase.
 If you would like to learn more about antibodies, please visit www.elabscience.com.

Focus on your research
Service for life science

Applications:WB-Western Blot IHC-Immunohistochemistry IF-Immunofluorescence IP-Immunoprecipitation FC-Flow cytometry ChIP-Chromatin Immunoprecipitation Reactivity: H-Human R-Rat M-Mouse Mk-Monkey Dg-Dog Ch-Chicken Hm-Hamster Rb-Rabbit Sh-Sheep Pg-Pig Z-Zebrafish X-Xenopus C-Cow.