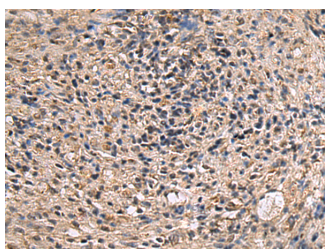


ITIH2 Polyclonal Antibody

Catalog No.	E-AB-53189	Reactivity	H,M
Storage	Store at -20°C. Avoid freeze / thaw cycles.	Host	Rabbit
Applications	IHC,ELISA	Isotype	IgG

Note: Centrifuge before opening to ensure complete recovery of vial contents.

Images



Immunohistochemistry of paraffin-embedded Human brain tissue using ITIH2 Polyclonal Antibody at dilution of 1:70(×200)

Immunogen Information

Immunogen	Fusion protein of human ITIH2
Gene Accession	BC132685
Swissprot	P19823
Synonyms	AI747202,H2P,IGHEP2,Intin2,ITI HC2,ITI heavy chain H2,ITI-HC2,Itih2,ITIH2,SHAP

Product Information

Buffer	PBS with 0.05% NaN ₃ and 40% Glycerol,pH7.4
Purify	Antigen affinity purification
Dilution	IHC 1:100-1:300, ELISA 1:5000-1:10000

Background

The inter-alpha-trypsin inhibitors (ITI) are a family of structurally related plasma serine protease inhibitors involved in extracellular matrix stabilization and in prevention of tumor metastasis. The ITI family contains multiple proteins made up of a light chain (see MIM 176870) and a variable number of heavy chains;ITIH2 (Inter-Alpha-Trypsin Inhibitor Heavy Chain 2) is a Protein Coding gene. Among its related pathways are Cell adhesion_Cell-matrix glycoconjugates. GO annotations related to this gene include serine-type endopeptidase inhibitor activity and endopeptidase inhibitor activity. An important paralog of this gene is ITIH3.

For Research Use Only

Thank you for your recent purchase.
 If you would like to learn more about antibodies, please visit www.elabscience.com.

**Focus on your research
 Service for life science**

Applications:WB-Western Blot IHC-Immunohistochemistry IF-Immunofluorescence IP-Immunoprecipitation FC-Flow cytometry ChIP-Chromatin Immunoprecipitation Reactivity: H-Human R-Rat M-Mouse Mk-Monkey Dg-Dog Ch-Chicken Hm-Hamster Rb-Rabbit Sh-Sheep Pg-Pig Z-Zebrafish X-Xenopus C-Cow.