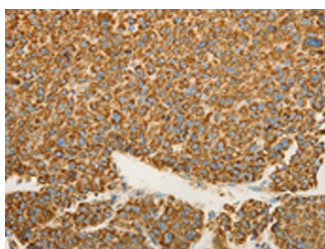


VDAC2 Polyclonal Antibody

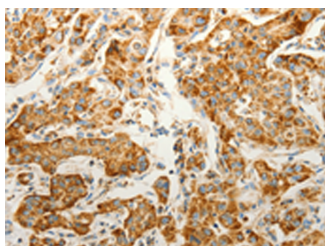
Catalog No.	E-AB-53192	Reactivity	H,M,R
Storage	Store at -20°C. Avoid freeze / thaw cycles.	Host	Rabbit
Applications	IHC,ELISA	Isotype	IgG

Note: Centrifuge before opening to ensure complete recovery of vial contents.

Images



Immunohistochemistry of paraffin-embedded Human liver cancer tissue using VDAC2 Polyclonal Antibody at dilution of 1:25(×200)



Immunohistochemistry of paraffin-embedded Human lung cancer tissue using VDAC2 Polyclonal Antibody at dilution of 1:25(×200)

Immunogen Information

Immunogen	Synthetic peptide of human VDAC2
Gene Accession	NP001171712 NP003366
Swissprot	P45880
Synonyms	POR, Porin-2, VDAC2, VDAC-2, VDACC2, VDAC2, Vdac6

Product Information

Buffer	PBS with 0.05% NaN3 and 40% Glycerol, pH7.4
Purify	Antigen affinity purification
Dilution	IHC 1:50-1:200, ELISA 1:2000-1:20000

Background

VDAC2 belongs to the eukaryotic mitochondrial porin family. It forms a channel through the mitochondrial outer membrane that allows diffusion of small hydrophilic molecules.

For Research Use Only

Thank you for your recent purchase.
 If you would like to learn more about antibodies, please visit www.elabscience.com.

**Focus on your research
 Service for life science**

Applications: WB-Western Blot IHC-Immunohistochemistry IF-Immunofluorescence IP-Immunoprecipitation FC-Flow cytometry ChIP-Chromatin Immunoprecipitation Reactivity: H-Human R-Rat M-Mouse Mk-Monkey Dg-Dog Ch-Chicken Hm-Hamster Rb-Rabbit Sh-Sheep Pg-Pig Z-Zebrafish X-Xenopus C-Cow.