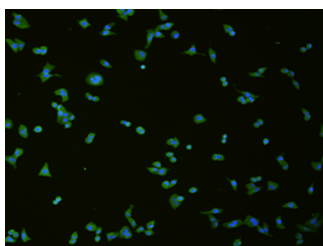


SLC18A3 Polyclonal Antibody

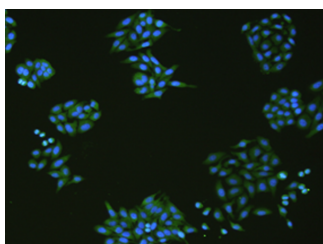
Catalog No.	E-AB-53197	Reactivity	H
Storage	Store at -20°C. Avoid freeze / thaw cycles.	Host	Rabbit
Applications	IF,ELISA	Isotype	IgG

Note: Centrifuge before opening to ensure complete recovery of vial contents.

Images



Immunofluorescence analysis of hela cell using SLC18A3 Polyclonal Antibody at dilution of 1:50



Immunofluorescence analysis of HepG2 cell using SLC18A3 Polyclonal Antibody at dilution of 1:50

Immunogen Information

Immunogen	Synthetic peptide of human SLC18A3
Gene Accession	NP003046
Swissprot	Q16572
Synonyms	AChR,MGC12716,rVAT,Slc18a3,VACHT,VACHT,Vesicular acetylcholine transporter

Product Information

Buffer	PBS with 0.05% NaN ₃ and 40% Glycerol,pH7.4
Purify	Antigen affinity purification
Dilution	IF 1: 50-1:200, ELISA 1:5000-1:60000

Background

This gene is a member of the vesicular amine transporter family. The encoded transmembrane protein transports acetylcholine into secretory vesicles for release into the extracellular space. Acetylcholine transport utilizes a proton gradient established by a vacuolar ATPase. This gene is located within the first intron of the choline acetyltransferase gene.

For Research Use Only

Thank you for your recent purchase.
 If you would like to learn more about antibodies, please visit www.elabscience.com.

**Focus on your research
 Service for life science**

Applications:WB-Western Blot IHC-Immunohistochemistry IF-Immunofluorescence IP-Immunoprecipitation FC-Flow cytometry ChIP-Chromatin Immunoprecipitation Reactivity: H-Human R-Rat M-Mouse Mk-Monkey Dg-Dog Ch-Chicken Hm-Hamster Rb-Rabbit Sh-Sheep Pg-Pig Z-Zebrafish X-Xenopus C-Cow.