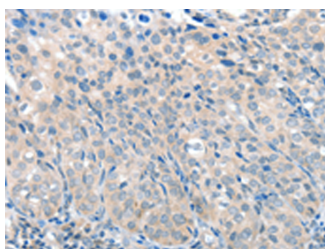


SLC17A6 Polyclonal Antibody

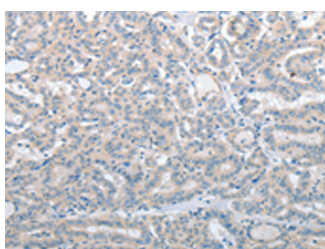
Catalog No.	E-AB-53200	Reactivity	H,M,R
Storage	Store at -20°C. Avoid freeze / thaw cycles.	Host	Rabbit
Applications	IHC,ELISA	Isotype	IgG

Note: Centrifuge before opening to ensure complete recovery of vial contents.

Images



Immunohistochemistry of paraffin-embedded Human cervical cancer tissue using SLC17A6 Polyclonal Antibody at dilution of 1:100(×200)



Immunohistochemistry of paraffin-embedded Human thyroid cancer tissue using SLC17A6 Polyclonal Antibody at dilution of 1:100(×200)

Immunogen Information

Immunogen	Synthetic peptide of human SLC17A6
Gene Accession	NP065079
Swissprot	Q9P2U8
Synonyms	Differentiation associated BNPI,VGLU2,VGLUT 2,VGluT2

Product Information

Buffer	PBS with 0.05% NaN3 and 40% Glycerol,pH7.4
Purify	Antigen affinity purification
Dilution	IHC 1:50-1:200, ELISA 1:2000-1:20000

Background

SLC17A6 (Solute Carrier Family 17 Member 6) is a Protein Coding gene. Diseases associated with SLC17A6 include Gnathodiaphyseal Dysplasia and Tendinosis. Among its related pathways are Circadian entrainment and GABAergic synapse. Gene Ontology (GO) annotations related to this gene include symporter activity and L-glutamate transmembrane transporter activity. An important paralog of this gene is SLC17A7.

For Research Use Only

Thank you for your recent purchase.
 If you would like to learn more about antibodies, please visit www.elabscience.com.

**Focus on your research
 Service for life science**

Applications:WB-Western Blot IHC-Immunohistochemistry IF-Immunofluorescence IP-Immunoprecipitation FC-Flow cytometry ChIP-Chromatin Immunoprecipitation Reactivity: H-Human R-Rat M-Mouse Mk-Monkey Dg-Dog Ch-Chicken Hm-Hamster Rb-Rabbit Sh-Sheep Pg-Pig Z-Zebrafish X-Xenopus C-Cow.