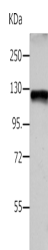


VCL Polyclonal Antibody

Catalog No.	E-AB-53202	Reactivity	H,M,R
Storage	Store at -20°C. Avoid freeze / thaw cycles.	Host	Rabbit
Applications	WB,ELISA	Isotype	IgG

Note: Centrifuge before opening to ensure complete recovery of vial contents.

Images



Western blot analysis of HeLa cells using VCL Polyclonal Antibody at dilution of 1:1200

Immunogen Information

Immunogen	Synthetic peptide of human VCL
Gene Accession	NP003364
Swissprot	P18206
Synonyms	CMD1W,CMH15,Epididymis luminal protein 114,HE L114,Metavinculin,MV,MVCL,OTTHUMP00000019861,OTTHUMP00000019862,VCL,VINC,VINC,Vinculin

Product Information

Calculated MW	123 kDa
Observed MW	Refer to figures
Buffer	PBS with 0.05% NaN ₃ and 40% Glycerol,pH7.4
Purify	Antigen affinity purification
Dilution	WB 1:1000-1:4000, ELISA 1:5000-1:240000

Background

Vinculin belongs to the vinculin/alpha-catenin family. It is an actin filament (F-actin)-binding protein which involved in cell-matrix adhesion and cell-cell adhesion. Vinculin is a cytoskeletal protein associated with cell-cell and cell-matrix junctions. Vinculin regulates cell-surface E-cadherin expression and potentiates mechanosensing by the E-cadherin complex. It plays an important role in cell morphology and locomotion.

For Research Use Only

Thank you for your recent purchase.

If you would like to learn more about antibodies, please visit www.elabscience.com.

**Focus on your research
 Service for life science**

Applications:WB-Western Blot IHC-Immunohistochemistry IF-Immunofluorescence IP-Immunoprecipitation FC-Flow cytometry ChIP-Chromatin Immunoprecipitation Reactivity: H-Human R-Rat M-Mouse Mk-Monkey Dg-Dog Ch-Chicken Hm-Hamster Rb-Rabbit Sh-Sheep Pg-Pig Z-Zebrafish X-Xenopus C-Cow.